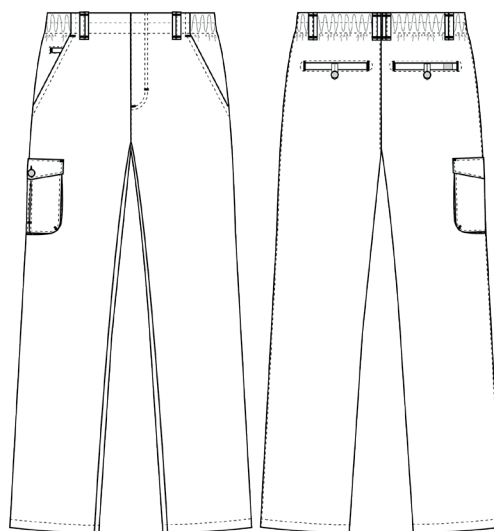


Perfect fit

5050212 UNISEX PULL-ON CHINO (Ordernumber: 5050212-0000)

Pull-on chinos with ideal fit and a very nice silhouette. Elastic throughout the waistband which provides a good comfortable stretch. Closable pocket on the thigh.



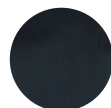
COLOURS:



0000-White



0011-Navy



0072-Black



FACTS:

- Smart details
- Elastic at the waist in pull-on pants
- Closable cargo pocket on the thigh
- Buttoned back pockets
- Bartack in contrast colour
- Fashionable contrast bindings inside the pants



QUALITY: 65/35% polyester/cotton - 210 g/m²

STOCK SIZES: XS - 4XL

CERTIFICERING & OUR ICONS:



STANDARD
100
2076-306
DTI

www.oeko-tex.com



STeP

www.oeko-tex.com



MADE IN
GREEN
CB3VTM7MX
DTI

www.oeko-tex.com



FINISHED MEASURES BEFORE WASHING:

		64	70	80	88	96	104	112	120	128	136	144	
	Stamping size	2XS	XS	S	M	L	XL	2XL	3XL	4XL	5XL	6XL	Tolerance
A	1/2 Waist width	30	33	36	39	43	47	50	54	58	61	65	+/- 2,0 cm
B	1/2 Hip width	46,2	49,2	52,3	55,5	59,8	63,6	67,8	71,6	75,7	79,8	84	+/- 1,5 cm
E1*	Rise (Help measure for hip)	15	15	15	15	15	17	17	17	17	17	17	
C	Side length	101	102	103	104	105,5	107	108,5	110	111,5	113	114,5	+/- 2,0 cm
D	Inseam length	82	82	82	82	82	82	82	82	82	82	82	+/- 1,5 cm

Please note: Final measures will depend on tolerance in garment making (See above) and measuring method (+/- 0.5 cm)
Also note: Washing and drying conditions in industrial laundering can further more give a shrinkage up to 3-5% (Depending of material)
All models meet the requirements industrial laundry. Washing instructions on our homepage www.nybo.com

DOMESTIC LAUNDERING:



PURVEYOR TO H. M. THE QUEEN OF DENMARK
NYBO
WORKWEAR SINCE 1962

