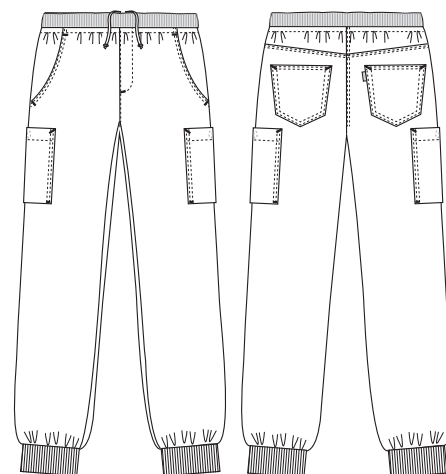


# Super Cool

**5050482 PULL-ON TROUSER, UNISEX**  
(Ordernumber: 5050482-0011)

Available also in lengths: short-10 cm, long+10 cm

Smart pull-on trousers inspired by street style; fit is relaxed at waist, hip, and thigh area. Legs and leg opening in narrow silhouette. A perfect choice for men and women. This style can also be worn at early stage of pregnancy. Elastic waist with soft ribbing and drawstring. Stylish slashed front pockets, jeans back pocket and two very large and closable thigh pockets with extra volume offer plenty of room for carrying needed devices and tools throughout a full workday. Rib at back leg opening adds comfort and guarantees functional leg turn-up in fast and easy way. Trousers designed with attention to user movement and comfort. Developed with ease for user to bend and stretch, without trousers pulling at waist and back. This style is perfect choice for different seasons and for daily wear both indoors and outdoors.



**COLOURS:**



0011-Navy

**FACTS:**

- Pull-on style with a casual fit
- Adjustable waist with wide elastic, soft ribbing, and drawstring
- Moderate/high waist
- Roomy hip and thigh fit, with narrower leg width
- Unisex fit
- Deep front slash pockets with extra space and easy access
- Two jeans-style back pockets
- Two large thigh pockets with closures and added volume

**QUALITY:** 63/34/3% pes/co/EOL stretch – 190 g/m<sup>2</sup>  
**STOCK SIZES:** XS - 4XL (5XL - 6XL special order)  
**CERTIFICERING & OUR ICONS:**

**GREEN BUTTON**  
GOOD FOR PEOPLE.  
GOOD FOR NATURE.



**FINISHED MEASURES BEFORE WASHING:**

	Stamping size	2XS	XS	S	M	L	XL	2XL	3XL	4XL	5XL	6XL	Tolerance
<b>A</b>	1/2 Waist width	31,2	33,3	35,4	37,8	41,3	45,2	49	52,9	56,7	60,8	68,3	+/- 1,5 cm
<b>B</b>	1/2 Hip width	44,6	47,5	50,5	54	57,5	62,5	67,5	72,5	77,5	82,5	82,5	+/- 1,5 cm
<b>E1</b>	Rise (Help measure for hip)	14	14,5	15	15,5	16,1	16,7	17,3	17,9	18,5	19,1	20,3	
<b>C</b>	Side length	97	98	99	100	101,7	103,3	105	106,6	108,3	109,9	113,2	+/- 1,5 cm
<b>C</b>	Side length -10 (Z11)	87	88	89	90	91,7	93,3	95	96,6	98,3	99,9	103,2	+/- 1,5 cm
<b>C</b>	Side length +10 (Z02)	107	108	109	110	111,7	113,3	115	116,6	118,3	119,9	123,2	+/- 1,5 cm
<b>D</b>	Inseam length	78	78	78	78	78	78	78	78	78	78	78	+/- 1,5 cm
<b>D</b>	Inseam length -10 (Z11)	68	68	68	68	68	68	68	68	68	68	68	+/- 1,5 cm
<b>D</b>	Inseam length +10 (Z02)	88	88	88	88	88	88	88	88	88	88	88	+/- 1,5 cm

Please note: Final measures will depend on tolerance in garment making (See above) and measuring method (+/- 0.5 cm)  
Also note: Washing and drying conditions in industrial laundering can further more give a shrinkage up to 3-5% (Depending of material)  
All models meet the requirements industrial laundry. Washing instructions on our homepage www.nybo.com

**DOMESTIC LAUNDERING:**

