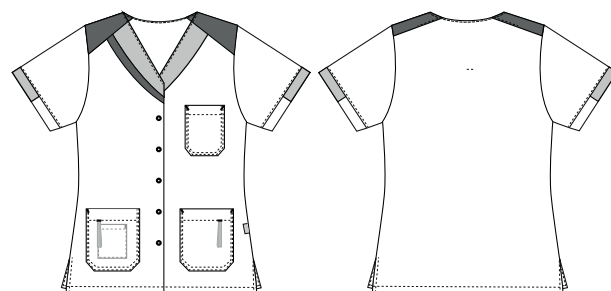


# Nova Premium

## 1361151 BEAUTIFULLY WAISTED TUNIC (Ordernumber: 1361151-0502)

Beautifully waisted tunic with good length covering hips nicely. Sleeves cover upper arms with nice modern appearance. The model has long slits at sides for optimal freedom of movement. The decent sized V-neck makes the neck and face appear a little slimmer. The model has one chest pocket with strap for pen or ID-card and two hip pockets with key straps. As an extra nice feature, a handy pocket for mobile phone is placed inside right hip pocket.



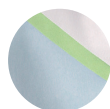
### COLOURS:



0126-White/  
Green/  
Light Blue



0218-Navy/  
Light Green/  
Blue



0212-Light  
Blue/White/  
Green



0502-Light  
Green/Navy/  
Light Blue



0607-Red/  
Navy/  
Grey



0604-Bor-  
deaux/Red/  
Orange



### FACTS:

- Two deep hip pockets
- Key straps inside both hip pockets
- Mobile pocket inside one hip pocket
- Feminine shape and fit

**QUALITY:** White: 50/50% polyester/TENCEL™ Lyocell - 225 g/m<sup>2</sup>  
Coloured: 50/50% polyester/TENCEL™ Lyocell - 200 g/m<sup>2</sup>

**STOCK SIZES:** XS - 4XL (5XL - 6XL special order)

**CERTIFICATING & OUR ICONS:**



STANDARD  
100  
2076-306  
DTI

www.oeko-tex.com



STeP

www.oeko-tex.com



MADE IN  
GREEN  
CB3VTM7MXY  
DTI

www.oeko-tex.com



**GREEN  
BUTTON**  
GOOD FOR PEOPLE.  
GOOD FOR NATURE.



TENCEL™ is a trademark of Lenzing AG.

### FINISHED MEASURES BEFORE WASHING:

		30	34	38	42	46	50	54	58	62	66	70	
	Stamping size	XXS	XS	S	M	L	XL	2XL	3XL	4XL	5XL	6XL	Tolerance
A	1/2 Chest width	44	48	52	56	60	66	72	78	84	88	92	+/- 1,5 cm
B	1/2 Bottom width	45,2	49,2	53,2	57,2	61,2	67,2	73,2	79,2	85,2	89,2	93,2	+/- 1,5 cm
C	Back length	70	71	72	73	74	75	76	77	78	79	80	+/- 1,5 cm
D	Sleeve length	23	23,5	24,5	25	25,5	25,5	27	27,5	28,5	29	29,5	+/- 1,0 cm

Please note: Final measures will depend on tolerance in garment making (See above) and measuring method (+/- 0.5 cm)

Also note: Washing and drying conditions in industrial laundering can further more give a shrinkage up to 3-5% (Depending of material)

All models meet the requirements industrial laundry. Washing instructions on our homepage [www.nybo.com](http://www.nybo.com)

### DOMESTIC LAUNDERING:

