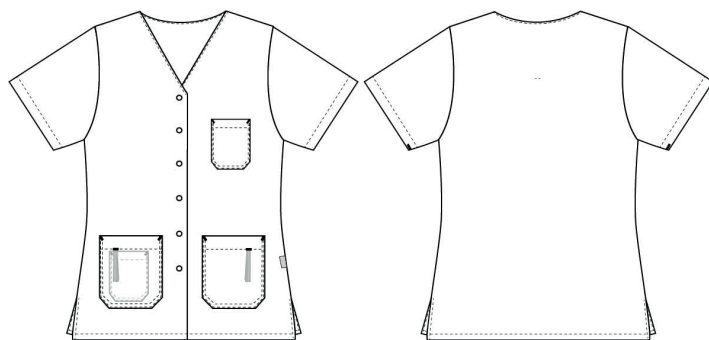


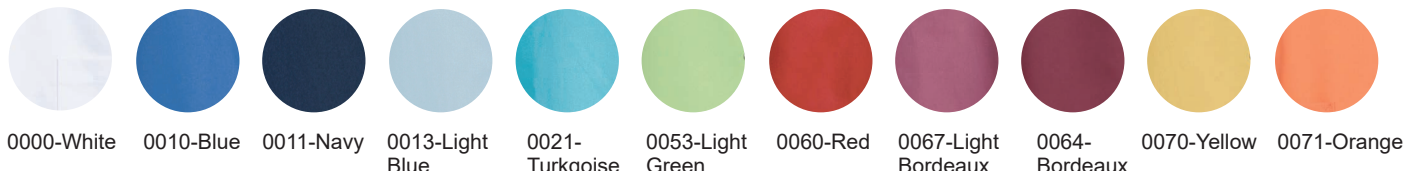
Charisma Premium

1360861 LADIES´ TUNIC (Ordernumber: 1360861-0011)

Beautiful waisted tunic with a good length that covers the behind nicely. The sleeves cover the upper arms with a nice and modern appearance. The model has long slits in the sides for optimal freedom of movement. The decent sized V-neck makes the neck and face appear a little slimmer. The model has one chest pocket and two hip pockets with key straps. As an extra nice feature a handy pocket for the mobile phone is placed inside the right hip pocket. This tunic is made of the new pleasant temperature regulating fabric contains TENCEL™ Lyocell fibers.



COLOURS:



FACTS:

- Key straps inside the hip pockets
- Pencil strap inside the chest pocket
- Mobile and chest pocket which meet users' present needs
- Slits for better comfort
- FlexFix press buttons
- Temperature regulating fabric
- V-neck makes the neck and face appear a little slimmer
- Comes in a wide spectrum of colours, to match different trousers



QUALITY: 50/50% polyester/TENCEL™ Lyocell - 200 g/m²

STOCK SIZES: XS - 4XL (5XL - 6XL special order)

CERTIFICERING & OUR ICONS:



STeP



GREEN BUTTON
GOOD FOR PEOPLE.
GOOD FOR NATURE.



TENCEL™ is a trademark of Lenzing AG.

FINISHED MEASURES BEFORE WASHING:

| | | 30 | 34 | 38 | 42 | 46 | 50 | 54 | 58 | 62 | 66 | 70 | |
|----------|------------------|------|------|----|----|------|------|-----|------|------|------|------|------------|
| | Stamping size | 2XS | XS | S | M | L | XL | 2XL | 3XL | 4XL | 5XL | 6XL | Tolerance |
| A | 1/2 Chest width | 44 | 48 | 52 | 56 | 60 | 66 | 72 | 78 | 84 | 90 | 96 | +/- 1,5 cm |
| B | 1/2 Bottom width | 45 | 49 | 53 | 57 | 61 | 67 | 73 | 79 | 85 | 91 | 97 | +/- 1,5 cm |
| C | Back length | 69 | 70 | 71 | 72 | 73 | 74 | 75 | 76 | 77 | 78 | 79 | +/- 1,5 cm |
| D | Sleeve length | 22,5 | 23,5 | 24 | 25 | 25,5 | 25,5 | 27 | 27,5 | 28,5 | 28,5 | 28,5 | +/- 1,0 cm |

Please note: Final measures will depend on tolerance in garment making (See above) and measuring method (+/- 0.5 cm)
Also note: Washing and drying conditions in industrial laundering can further more give a shrinkage up to 3-5% (Depending of material)
All models meet the requirements industrial laundry. Washing instructions on our homepage www.nybo.com

DOMESTIC LAUNDERING:



PURVEYOR TO H. M. THE QUEEN OF DENMARK

NYBO
WORKWEAR SINCE 1962

