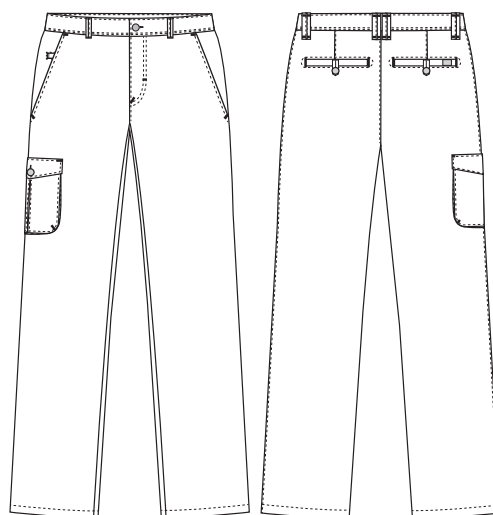


Perfect fit

1050992 CHINO (Ordernumber: 1050992-0000)

Ladies' chinos with ideal fit and a very nice silhouette. Fashionable mid length front rise. Inner adjustable waistband. Closable pocket on the thigh.



COLOURS:



0000-White 0011-Navy 0072-Black



FACTS:

- Smart details
- Inner adjustable waistband
- Closable cargo pocket on the thigh
- Buttoned back pockets
- Bartack in contrast colour
- Fashionable contrast bindings inside the pants



QUALITY: 65/35% polyester/cotton - 210 g/m²

STOCK SIZES: 34 - 62

CERTIFICERING & OUR ICONS:



STANDARD
100
2076-306
DTI

www.oeko-tex.com



STeP

www.oeko-tex.com



MADE IN
GREEN

CB3VTM7MX
DTI

www.oeko-tex.com



FINISHED MEASURES BEFORE WASHING:

		2XS		XS		S		M		L		XL		2XL		3XL		4XL		5XL	
	Stamping size	30	32	34	36	38	40	42	44	46	48	50	52	54	56	58	60	62	64	66	Tolerance
A	1/2 Waist width	33	35	37	39	41	43	45	47	49	51	53	55	57	59	61	63	65	67	69	+/- 1,5 cm
B	1/2 Hip width	45	47	49	50	52	53,5	55,5	57,5	59	61	63	65	67,5	70	72	75	77	79	81,5	+/- 1,5 cm
E1*	Rise	11,5	12	12,5	13	14	14,5	15	15,5	16	17	18	19	20	21	21,5	22,5	23,5	24,5	25,5	
C	Side length	95,5	100	100,5	101	102	102,5	103	103,5	104	105	106	107	108	109	109,5	110,5	111,5	112,5	113,5	+/- 2,0 cm
D	Inseam length	82	82	82	82	82	82	82	82	82	82	82	82	82	82	82	82	82	82	82	+/- 1,5 cm

Please note: Final measures will depend on tolerance in garment making (See above) and measuring method (+/- 0.5 cm)
Also note: Washing and drying conditions in industrial laundering can further more give a shrinkage up to 3-5% (Depending of material)
All models meet the requirements industrial laundry. Washing instructions on our homepage www.nybo.com

DOMESTIC LAUNDERING:



PURVEYOR TO H. M. THE QUEEN OF DENMARK

NYBO

WORKWEAR SINCE 1962

