

# New Nordic

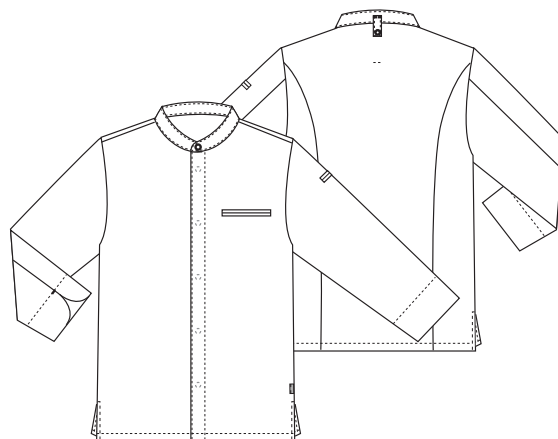
## 501021-09 CHEF'S JACKET WITH LONG SLEEVES (Ordernumber: 501021-09-0000)

Cool and minimalistic chef's jacket with long sleeves made in earth tones, perfect for both men and women. Designed with ergonomic silhouette to give the jacket a high functionality and comfortable fit. Hidden press buttons at front closure gives a clean and minimalistic look in combination with subtle, elegant and practical double welt chest pocket. At bottom the jacket has slits for increased movement. The mandarin collar emphasises the classic design with respect for traditions closing with press button. New designed wide apron strap at back and double welt arm pocket. Construction of back panel gives good flexibility and stretchability.

### COLOURS:



0000-White 0011-Navy 0034-Khaki 0050-Geen 0064-Smokeberry 0072-Black



### FACTS:

- Good and comfortable fit
- Extra stretchability in back
- Practical sleeve length, suitable for working in kitchen areas
- Neck strap at back for bib apron
- Double welt chest pocket
- Double welt arm pocket
- Side slits for better freedom of movement



**QUALITY:** 65/35% polyester/cotton - 210 g/m<sup>2</sup>  
**STOCK SIZES:** XS - 4XL (5XL - 6XL special order)  
**CERTIFICERING & OUR ICONS:**



STANDARD  
100  
2076-306  
DTI  
www.oeko-tex.com



### FINISHED MEASURES BEFORE WASHING:

		40	44	48	52	56	60	64	68	72	76	80	
	Stamping size	2XS	XS	S	M	L	XL	2XL	3XL	4XL	5XL	6XL	Tolerance
A	1/2 Chest width	45	49	53	57	61	66	71	77	82	87	92	+/- 1,5 cm
B	1/2 Bottom width	45	49	53	57	61	66	71	77	82	87	92	+/- 1,5 cm
C	Back length CB	73	74	75	76	77	78	79	80	81	82	83	+/- 1,5 cm
D	Sleeve length	59	60	61	62	63	64	65	66	67	68	69	+/- 1,0 cm

Please note: Final measures will depend on tolerance in garment making (See above) and measuring method (+/- 0.5 cm)  
 Also note: Washing and drying conditions in industrial laundering can further more give a shrinkage up to 3-5% (Depending of material)  
 All models meet the requirements industrial laundry. Washing instructions on our homepage [www.nybo.com](http://www.nybo.com)

### DOMESTIC LAUNDERING:



PURVEYOR TO H. M. THE QUEEN OF DENMARK

**NYBO**  
WORKWEAR SINCE 1962