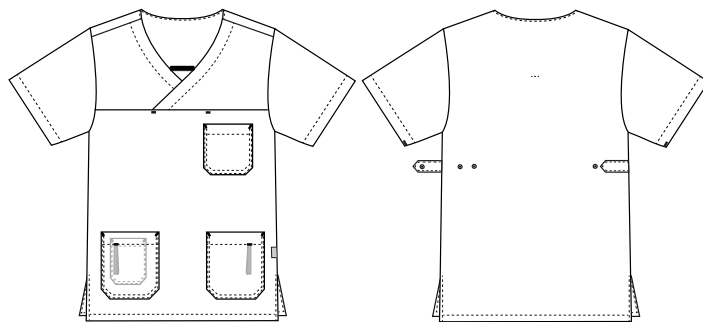


Charisma Premium

5470651 SMOCK, TENCEL™ (Ordernumber: 5470651-0060)

The model has long slits in the sides for extra width. The shape is cut straight and covers well at the back. The sleeves cover the upper arms nicely and has a modern and trendy appearance. Produced in the pleasant temprature regulating fabric TENCEL™.



COLOURS:



FACTS:

- Key straps inside the hip pockets
- Pencil strap inside the chest pocket
- Mobile and chest pocket which meet users' present needs
- Slits for better comfort
- Adjustment straps in the unisex model for better freedom of movement
- FlexFix press buttons
- Temperature regulating fabric
- V-neck makes the neck and face appear a little slimmer
- Comes in a wide spectrum of colours, to match different trousers



QUALITY: 50/50% polyester/ TENCEL™ - 200 g/m²

STOCK SIZES: XS - 4XL (5XL - 6XL special order)

CERTIFICERING & OUR ICONS:



FINISHED MEASURES BEFORE WASHING:

| | | 40 | 44 | 48 | 52 | 56 | 60 | 64 | 68 | 72 | 76 | 80 | |
|----------|------------------|------|------|------|------|------|------|------|------|------|------|------|------------|
| | Stamping size | 2XS | XS | S | M | L | XL | 2XL | 3XL | 4XL | 5XL | 6XL | Tolerance |
| A | 1/2 Chest width | 47 | 51 | 55 | 59 | 63 | 68 | 73 | 78 | 83 | 88 | 93 | +/- 1,5 cm |
| B | 1/2 Bottom width | 48,5 | 52,5 | 56,5 | 60,5 | 64,5 | 69,5 | 74,5 | 79,5 | 84,5 | 89,5 | 94,5 | +/- 1,5 cm |
| C | Back length | 74,5 | 75,5 | 76,5 | 77,5 | 78,5 | 79,5 | 80,5 | 81,5 | 82,5 | 83,5 | 84,5 | +/- 1,5 cm |
| D | Sleeve length | 26 | 27 | 28 | 29 | 30 | 31 | 32 | 33 | 34 | 35 | 36 | +/- 1,0 cm |

Please note: Final measures will depend on tolerance in garment making (See above) and measuring method (+/- 0.5 cm)
Also note: Washing and drying conditions in industrial laundering can further more give a shrinkage up to 3-5% (Depending of material)
All models meet the requirements industrial laundry. Washing instructions on our homepage www.nybo.com

DOMESTIC LAUNDERING:

