

Harmony

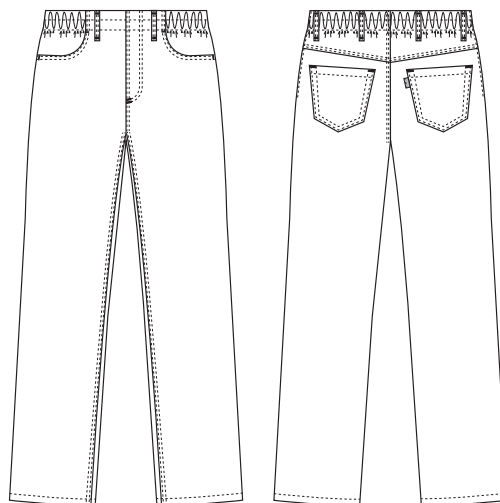
1050401 PULL-ON JEANS (Ordernumber: 1050401-0000)

The specially developed 4cm wide elastic waistband, ensures optimum comfort for the user. The pull-on style has a 'false fly' and looks like the other trousers in the harmony collection. These flexible pull-on trousers can be worn by men and women and can even be worn early on in pregnancies.

COLOURS:



0000-White



FACTS:

- Front and back pockets
- Classic denim details
- Stretchable fabric
- Key strap at the waistband
- Elastic adjustment at the waistband



QUALITY: 64/33/3% polyester/cotton/EOL stretch - 285 g/m²

STOCK SIZES: XS-4XL

CERTIFICERING & OUR ICONS:



STANDARD 100
2076-306
DTI
www.oeko-tex.com



STeP

www.oeko-tex.com



MADE IN GREEN
CB3VTM7MXY
DTI
www.oeko-tex.com



FINISHED MEASURES BEFORE WASHING:

		62	70	78	86	94	102	110	118	126	
	Stamping size	XS	S	M	L	XL	2XL	3XL	4XL	5XL	Tolerance
A	1/2 Waist width	29,5	33	36	40	43,5	47,5	50	55	60	+/- 2,0 cm
B	1/2 Hip width	48,2	51,5	54,5	58,7	62,6	65,7	70,6	74,7	78,7	+/- 1,5 cm
E1*	Rise (Help measure for hip)	15	15	104	15	17	17	17	17	17	
C	Side length	102	103,2	114	105,8	107,3	108,7	110,3	111,8	113,3	+/- 2,0 cm
	Side length + 10 cm (102)	112	113,2	124	115,8	117,3	118,7	120,3	121,8	123,3	+/- 2,0 cm
D	Inseam length	82	82	82	82	82	82	82	82	82	+/- 1,5 cm
	Inseam length + 10 cm (102)	92	92	92	92	92	92	92	92	92	+/- 1,5 cm

Please note: Final measures will depend on tolerance in garment making (See above) and measuring method (+/- 0.5 cm)
Also note: Washing and drying conditions in industrial laundering can further more give a shrinkage up to 3-5% (Depending of material)
All models meet the requirements industrial laundry. Washing instructions on our homepage www.nybo.com

DOMESTIC LAUNDERING:



PURVEYOR TO H. M. THE QUEEN OF DENMARK

NYBO
WORKWEAR SINCE 1962

