

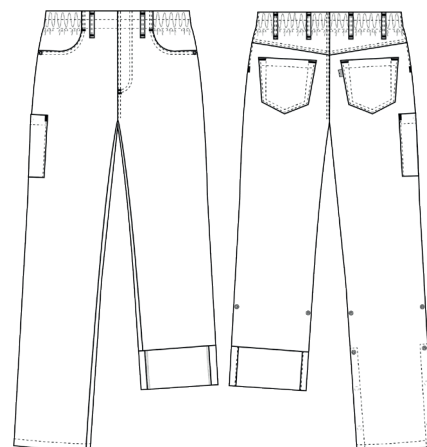
# Super Cool

## 1051192 PULL-ON JEANS - 245 G/M<sup>2</sup>

(Ordernumber: 1051192-0011)

Also available in length +10 cm.

These pull-on jeans in classic 5-pocket style with special developed 4 cm elastic inside waist offers an optimal fit and room for movement for women and men who prefer casual fit with slimming hip and thigh. This style can also be worn in early stage of pregnancy. The special designed flat-front waist gives a stylish and modern appearance. Belt loops placed close to the deep and roomy front pockets are highly functional for e.g., key chains and ID cards. The discreet thigh pocket, with extra volume and press button closure, is well-placed so there is easy access during a busy day. Adjustable leg length, with functional roll-up detailing, makes these jeans a perfect choice for different seasons and for daily wear both indoors and outdoors.



### COLOURS:



0011-Navy

### FACTS:

- Pull-on style with 5-pocket details.
- Wide elastic band at waist with flat-front look.
- Moderate/high waist height.
- Slimming hip and thigh width suitable for unisex fit.
- Deep front pockets with extra room and easy access.
- Two jeans back pockets.
- One thigh pocket with press button closure. Pocket size fits modern mobile phones and devises.
- Adjustable inseam length with practical press button detail, to accommodate all seasons.



**QUALITY:** 63/34/3% polyester/cotton/EOL stretch – 245 g/m<sup>2</sup>

**STOCK SIZES:** XS - 4XL

**CERTIFICERING & OUR ICONS:**



STANDARD  
100  
2076-306  
DTI

www.oeko-tex.com



STeP

www.oeko-tex.com



MADE IN  
GREEN  
CB3VTM7MX4  
DTI

www.oeko-tex.com



Key strap  
Nybo Workwear A/S



adjustable length  
Nybo Workwear A/S



stretch  
Nybo Workwear A/S



mobile pocket  
Nybo Workwear A/S



**amfori**   
Trade with purpose

### FINISHED MEASURES BEFORE WASHING:

	Stamping size	2XS	XS	S	M	L	XL	2XL	3XL	4XL	5XL	6XL	Tolerance
<b>A</b>	1/2 Waist width	26,5	29,5	33	36	40	43,5	47,5	50	55	58,5	62	+/- 2,0 cm
<b>B</b>	1/2 Hip width	45,2	48,2	51,2	54,5	56,5	62,5	66,7	70,5	74,5	78,5	82,5	+/- 1,5 cm
<b>E1*</b>	Rise (Help measure for hip)	15	15	15	15	15	17	17	17	17	17	17	
<b>C</b>	Side length	100,5	101,5	102,5	104	105	106,5	108	109,5	111,5	113	114,5	+/- 2,0 cm
<b>C</b>	Side length -10	90,5	91,5	92,5	94	95	96,5	98	99,5	101,5	103	104,5	+/- 2,0 cm
<b>C</b>	Side length +10	110,5	111,5	112,5	114	115	116,5	118	119,5	121,5	123	124,5	+/- 2,0 cm
<b>D</b>	Inseam length	82	82	82	82	82	82	82	82	82	82	82	+/- 1,5 cm
<b>D</b>	Inseam length -10	72	72	72	72	72	72	72	72	72	72	72	+/- 1,5 cm
<b>D</b>	Inseam length +10	92	92	92	92	92	92	92	92	92	92	92	+/- 1,5 cm

Please note: Final measures will depend on tolerance in garment making (See above) and measuring method (+/- 0.5 cm)

Also note: Washing and drying conditions in industrial laundering can further more give a shrinkage up to 3-5% (Depending of material)

All models meet the requirements industrial laundry. Washing instructions on our homepage [www.nybo.com](http://www.nybo.com)

### DOMESTIC LAUNDERING:



  
PURVEYOR TO H. M. THE QUEEN OF DENMARK

**NYBO**  
WORKWEAR SINCE 1962

