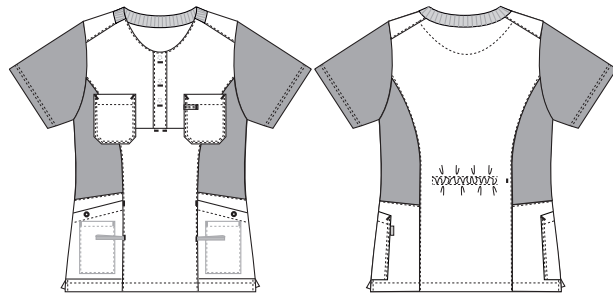


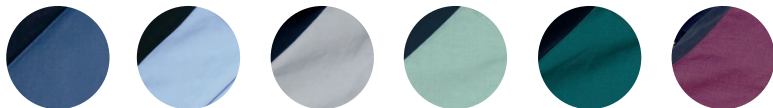
# Sporty Mix

## 1470429 LADIES' SMOCK (Ordernumber: 1470429-0013)

Feminine ladies' smock with fine details. Constructed stretch at both the front and back provides excellent stability and comfort. The top features a hidden waist adjustment at the back, allowing for an individualized fit. The tunic has a good length that covers the hips and back in all work situations. Side slits enhance comfort and freedom of movement.



### COLOURS:



0011-Navy 0013-Light blue 0049-Grey 0053-Light green 0054-Dark green 0064-Bordeaux

### FACTS:

- Key straps inside the hip pockets
- Pencil strap inside the chest pocket
- Mobile and chest pocket which meet users' present needs
- All pockets are fitted with press buttons to secure pocket contents
- Stretchable back with inner waist adjustment in the ladies' models
- Second quality in stretch for better comfort
- Tested and proven very high breathability



**QUALITY:** 50/50% polyester/BCI cotton - 140 g/m<sup>2</sup>

Piqué in 50/50% polyester/BCI cotton - 150 g/m<sup>2</sup>

**STOCK SIZES:** XS - 4XL (5XL - 6XL special order)

**CERTIFICERING & OUR ICONS:**



STANDARD  
100

2076-306  
DTI

www.oeko-tex.com



### FINISHED MEASURES BEFORE WASHING:

	Stamping size	2XS	XS	S	M	L	XL	2XL	3XL	4XL	5XL	6XL	Tolerance
<b>A</b>	1/2 Chest width	44	48	52	56	60	66	72	78	84	90	96	+/- 1,5 cm
<b>B</b>	1/2 Bottom width	44	48	52	56	60	66	72	78	84	90	96	+/- 1,5 cm
<b>C</b>	Back length	70,5	71,5	72,5	73,5	74,5	75,5	76,5	77,5	78,5	79,5	80,5	+/- 1,5 cm
<b>D</b>	Sleeve length	24	24,5	25	25,5	26	26,5	27	28	29	30	31	+/- 1,0 cm

Please note: Final measures will depend on tolerance in garment making (See above) and measuring method (+/- 0.5 cm)

Also note: Washing and drying conditions in industrial laundering can further more give a shrinkage up to 3-5% (Depending of material)

All models meet the requirements industrial laundry. Washing instructions on our homepage [www.nybo.com](http://www.nybo.com)

### DOMESTIC LAUNDERING:

