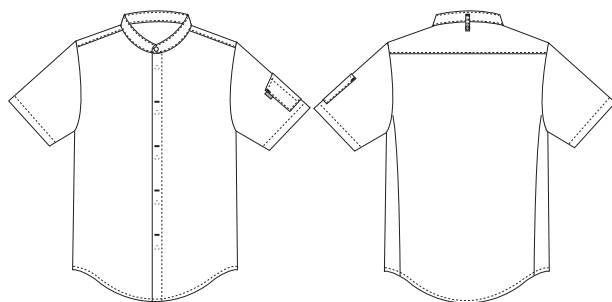


Essence

5010171 CHEF JACKET WITH SHORT SLEEVE (Ordernumber: 5010171-0072)

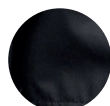
Minimalistic and understated chef jacket with short sleeves, perfect for both men and women. Designed with basic slim silhouette the jacket has a casual and comfortable fit. Hidden press buttons at front closure underlines clean and minimalistic look in combination with practical pocket at left sleeve. At bottom the jacket is curved drawing inspiration from classic men's shirts. The mandarin collar emphasizes the classic design with respect for traditions and has apron strap at back. Construction of back panel gives good flexibility and stretchability. Fabrics made of upcycled materials and responsible production processes.



COLOURS:



0000-White



0072-Black

FACTS:

- Basic slim and comfortable fit
- Extra stretchability in back
- Neck strap at back for bib apron
- Double pocket at left sleeve for utensils



QUALITY: 50/50% Lyocell Refibra/Recycled polyester – 235 g/m²

STOCK SIZES: XS - 4XL

CERTIFICERING & OUR ICONS:



www.oeko-tex.com



www.oeko-tex.com



FINISHED MEASURES BEFORE WASHING:

Stamping size		2XS	XS	S	M	L	XL	2XL	3XL	4XL	5XL	Tolerance
A	1/2 Chest width	43,5	48	52,5	57	61,5	66	70,5	75	79,5	84	+/- 1,5 cm
B	1/2 Bottom width	43	47,5	52	56,5	61	65,5	70	75	79,5	84	+/- 1,5 cm
C	Back length	73	74	75	76	77	78	79	80	81	82	+/- 1,5 cm
D	Sleeve length	30	30,5	31,5	32	32,5	33	34	34	35	35,5	+/- 1,0 cm

Please note: Final measures will depend on tolerance in garment making (See above) and measuring method (+/- 0.5 cm)
Also note: Washing and drying conditions in industrial laundering can further more give a shrinkage up to 3-5% (Depending of material)
All models meet the requirements industrial laundry. Washing instructions on our homepage www.nybo.com

DOMESTIC LAUNDERING:



PURVEYOR TO H. M. THE QUEEN OF DENMARK

NYBO
WORKWEAR SINCE 1962

