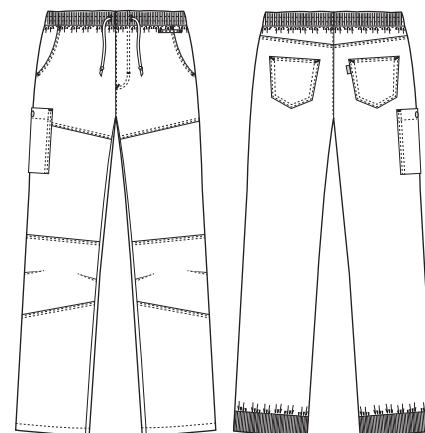


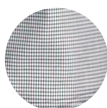
# New Nordic

## 5050381 CASUAL TROUSERS PULL-ON (Ordernumber: 5050381-0800)

These casual trousers are design in a street fit displaying a loose-tapered silhouette for both men and women. Ribbing and tie string at waist and ribbing in bottom of back legs give the trousers a cool and comfortable fit during a busy day. With pockets at front and back and closable thigh pocket there is many possibilities to carry daily devices. Below waistband is a discreetly placed service strap, to carry hand towels when working in dining area and in kitchen.



### COLOURS:



0800-Black-white pepita

### FACTS:

- Key straps inside the hip pockets
- Pencil strap inside the chest pocket
- Mobile and chest pocket which meet users' present needs
- All pockets are fitted with press buttons to secure pocket contents
- Stretchable back with inner waist adjustment in the ladies' models
- Adjustment straps in the unisex model for better freedom of movement
- Sporty lines and flatlock in contrast which gives a smart look
- Second quality in stretch for better comfort

**QUALITY:** 65/35% polyester/cotton – 240 g/m<sup>2</sup>  
**STOCK SIZES:** XS - 4XL (5XL - 6XL special order)  
**CERTIFICERING & OUR ICONS:**



STANDARD  
100  
2076-306  
DTI  
www.oeko-tex.com



### FINISHED MEASURES BEFORE WASHING:

		64	72	80	88	96	104	112	120	128	136	144	
	Stamping size	2XS	XS	S	M	L	XL	2XL	3XL	4XL	5XL	6XL	Tolerance
<b>A</b>	1/2 Waist width	30	33	37	41	45	48	51	54	57	60	63	+/- 2,0 cm
<b>B</b>	1/2 Hip width	44,5	48,5	52,5	56,5	60,5	64,5	68,5	72,5	76,5	80,5	84,5	+/- 1,5 cm
<b>E1*</b>	Rise (Help measure for hip)	16	18	18	19	20	21	22	23,5	24,5	26	27	
<b>C</b>	Side length	100	101	102	103	104	105	106	107,5	108,5	110	111	+/- 2,0 cm
<b>D</b>	Inseam length	79	79	79	79	79	79	79	79	79	79	79	+/- 1,5 cm

Please note: Final measures will depend on tolerance in garment making (See above) and measuring method (+/- 0.5 cm)  
 Also note: Washing and drying conditions in industrial laundering can further more give a shrinkage up to 3-5% (Depending of material)  
 All models meet the requirements industrial laundry. Washing instructions on our homepage [www.nybo.com](http://www.nybo.com)

### DOMESTIC LAUNDERING:



PURVEYOR TO H. M. THE QUEEN OF DENMARK

**NYBO**  
WORKWEAR SINCE 1962