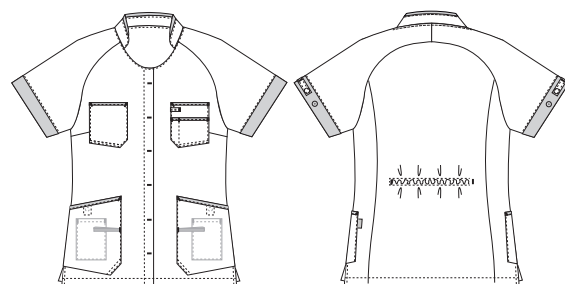


# Comfort

## 1361189 LADY'S TUNIC (Ordernumber: 1360861-0021)

Slightly waisted lady's tunic with hidden press buttons at front closure and soft tone-in-tone detail at collar and sleeves. Stretchability in the back gives nice flexibility. The tunic has hidden adjustment at the back to allow individual shaping at waist and suitable for different body types. Raglan sleeves and adjustable sleeve openings ensure optimal comfort and fit. Two large chest pockets with a hidden pen-strap and a visible strap for attaching ID-cards adds extra comfort and functionality. Roomy and closable hip pockets with key straps and large integrated pockets for mobile phones. The tunic has a good length covering lower back in all situations. Slits at sides adds to flexibility and movement.



### COLOURS:



0011-  
Navy



0021-  
Turquoise



0054-  
Dark green



0063-  
Pink



0064-  
Bordeaux

### FACTS:

- Engineered stretch at the back, with additional adjustment inside back waist.
- Raglan sleeves and adjustable sleeve opening for optimal comfort,
- Soft tone-in-tone details at collar and sleeves.
- Hidden press button at front closure.
- Closable hip pockets with press buttons, extra-large mobile pockets, and key straps.
- Two chest pockets. One pocket has hidden pen strap, and visible strap for ID cards.
- Functional and presentable back length, covering hip area nicely.
- Slits at side seams.
- Tested and proven high breathability.



**QUALITY:** 55/45% TENCEL™/recycled polyester, 165 g/m<sup>2</sup>

**STOCK SIZES:** XS - 4XL

**CERTIFICERING & OUR ICONS:**



STANDARD  
100  
2076-306  
DTI

www.oeko-tex.com



### FINISHED MEASURES BEFORE WASHING:

Stamping size	2XS	XS	S	M	L	XL	2XL	3XL	4XL	5XL	Tolerance	
A	1/2 Chest width	43,5	47,5	51,5	55,5	60,5	66,5	72,5	78,5	84,5	90,5	+/- 1,5 cm
B	1/2 Bottom width	46,8	50,8	54,8	58,8	63,8	69,8	75,8	81,8	87,8	93,8	+/- 1,5 cm
C	Back length	72,5	72,5	74,5	74,5	76,5	76,5	78,5	78,5	80,5	80,5	+/- 1,5 cm
D	Sleeve length	30,3	31,1	33,7	34,5	36,1	37,8	39,5	42,2	42,9	44,6	+/- 1,0 cm

Please note: Final measures will depend on tolerance in garment making (See above) and measuring method (+/- 0.5 cm)  
Also note: Washing and drying conditions in industrial laundering can further more give a shrinkage up to 3-5% (Depending of material)  
All models meet the requirements industrial laundry. Washing instructions on our homepage [www.nybo.com](http://www.nybo.com)

### DOMESTIC LAUNDERING:



KONGELIG HOFLEVERANDØR  
**NYBO**  
WORKWEAR SINCE 1962

