

# Sporty T800

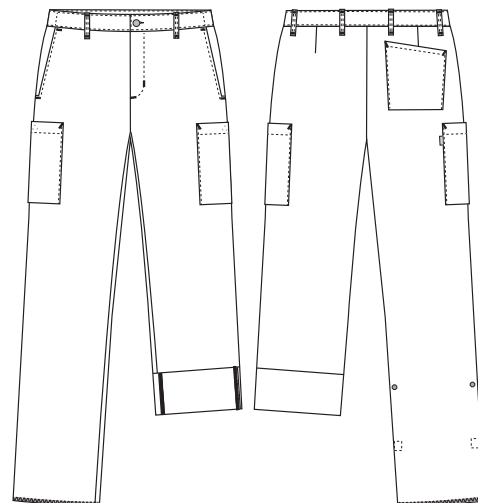
## 1051379 STRETCH PANTS, UNHEMMED (Ordernumber: 1051379-0011)

These flexible and light weight multi stretch pants are a perfect match for all who prefer trousers with a well-proportioned shape. The waistline is narrower than the hip area. Inside the back of waistband is adjustable elastic for optimal comfort in work situations. Belt loops placed close to the deep and roomy front pockets are highly functional for e.g., key chains and ID cards. The large, yet discreet thigh pockets, with extra volume and press button closure, are well-placed so there is easy access during a busy day. Adjustable leg length, with functional roll-up detailing, makes these pants a perfect choice for different seasons and for daily wear both indoors and light wear outdoors.

### COLOURS:



0011-Navy



### FACTS:

- Elegant and minimalistic appearance
- Waistband with button and zipper at front
- Adjustable elastic in the back of waistband
- Belt loops accommodating key chains etc
- Moderate/high waist height with roomy hip and thigh width
- Deep front pockets with extra room and easy access
- One back pocket
- Two large thigh pockets with press button closure. Pocket size fits modern mobile phones and devices
- Adjustable inseam length with easy-access press button detail, to accommodate all seasons
- 4-way stretch quality with integrated cooling effect
- Same style in 79 cm inseam: 1051359

**QUALITY:** 100% polyester T800 stretch – 120 g/m<sup>2</sup>

**STOCK SIZES:** XS - 4XL

**CERTIFICERING & OUR ICONS:**



**STANDARD  
100**

2076-306  
DTI

[www.oeko-tex.com](http://www.oeko-tex.com)



	Stamping size	2XS	XS	S	M	L	XL	2XL	3XL	4XL	5XL	6XL	Tolerance
<b>A</b>	1/2 Waist width	33	36,5	40	44	49	55	61	67	73	79	85	+/- 1,5 cm
<b>B</b>	1/2 Hip width	45,5	48,5	51,5	55	58,5	63,5	68,5	73,5	78,5	83,5	88,5	+/- 1,5 cm
<b>E1*</b>	Rise (Help measure for hip)	13,6	14,1	14,5	15	15,5	16	16,5	17	17,5	18	18,5	
<b>C</b>	Side length	112,5	113,5	114,5	115,5	117	118,5	120	121,5	123	124,5	126	+/- 1,5 cm
<b>D</b>	Inseam length	92	92	92	92	92	92	92	92	92	92	92	+/- 1,5 cm

Please note: Final measures will depend on tolerance in garment making (See above) and measuring method (+/- 0.5 cm)

Also note: Washing and drying conditions in industrial laundering can further more give a shrinkage up to 3-5% (Depending of material)

All models meet the requirements industrial laundry. Washing instructions on our homepage [www.nybo.com](http://www.nybo.com)

### DOMESTIC LAUNDERING:



KONGELIG HOFLEVERANDØR  
**NYBO**  
WORKWEAR SINCE 1962