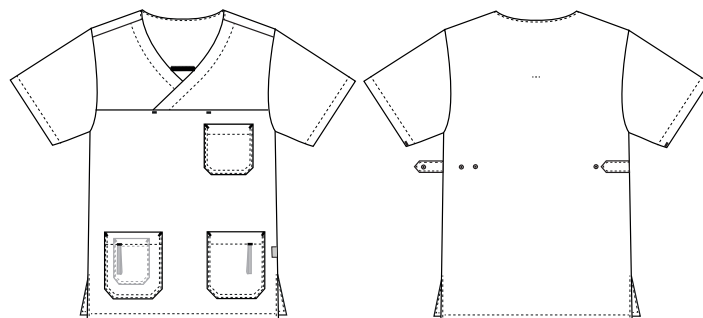


# Charisma

## 547066120 SMOCK (Ordernumber: 547066120-14)

The model has long slits in the sides for extra width. The shape is cut straight and covers well at the back. The sleeves cover the upper arms nicely and has a sporty appearance.



### COLOURS:



14-Sailor  
Blue



22-Turquoise



25-Blue



58-Light  
Green



63-Pink



67-Bordeaux

### FACTS:

- Key straps inside the hip pockets
- Pencil strap inside the chest pocket
- Mobile and chest pocket which meet users' present needs
- Slits for better comfort
- V-neck makes the neck and face appear a little slimmer
- Comes in a wide spectrum of colours, to match different trousers



**QUALITY:** 50/50% polyester/cotton - 180 g/m<sup>2</sup>  
**STOCK SIZES:** XS - 4XL (5XL - 6XL special order)  
**CERTIFICERING & OUR ICONS:**



### FINISHED MEASURES BEFORE WASHING:

|   |                  | 40   | 44   | 48   | 52   | 56   | 60   | 64   | 68   | 72   | 76   | 80   |            |
|---|------------------|------|------|------|------|------|------|------|------|------|------|------|------------|
|   | Stamping size    | 2XS  | XS   | S    | M    | L    | XL   | 2XL  | 3XL  | 4XL  | 5XL  | 6XL  | Tolerance  |
| A | 1/2 Chest width  | 47   | 51   | 55   | 59   | 63   | 68   | 73   | 78   | 83   | 88   | 93   | +/- 1,5 cm |
| B | 1/2 Bottom width | 48,5 | 52,5 | 56,5 | 60,5 | 64,5 | 69,5 | 74,5 | 79,5 | 84,5 | 89,5 | 94,5 | +/- 1,5 cm |
| C | Back length      | 74,5 | 75,5 | 76,5 | 77,5 | 78,5 | 79,5 | 80,5 | 81,5 | 82,5 | 83,5 | 84,5 | +/- 1,5 cm |
| D | Sleeve length    | 26   | 27   | 28   | 29   | 30   | 31   | 32   | 33   | 34   | 35   | 36   | +/- 1,0 cm |

Please note: Final measures will depend on tolerance in garment making (See above) and measuring method (+/- 0.5 cm)  
 Also note: Washing and drying conditions in industrial laundering can further more give a shrinkage up to 3-5% (Depending of material)  
 All models meet the requirements industrial laundry. Washing instructions on our homepage [www.nybo.com](http://www.nybo.com)

### DOMESTIC LAUNDERING:

