

Take Away

5010199 CHEF'S JACKET (Ordernumber: 5010159-0072)

This classic chef's jacket is double breasted and has long sleeves. With practical closure of two visible press buttons at neck opening and hidden press buttons at front, it presents a classic and stylish look. Mandarin collar is more open than usual to allow freedom of movement in a busy environment. At back, jacket has a neck strap to ensure apron strap is kept in place throughout the day.

Fit is classic and roomy, suitable for different body types.

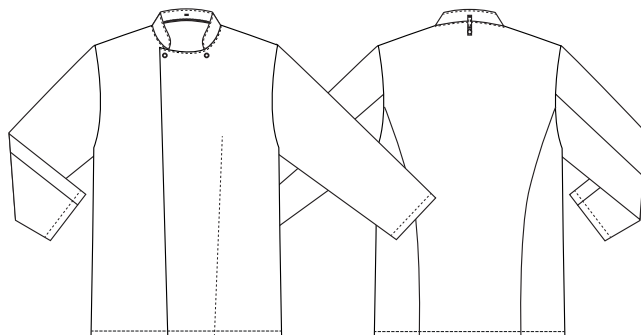
COLOURS:



0000-White



0072-Black



FACTS:

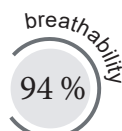
- Double breasted with hidden press buttons
- Long sleeves
- Collar with gap for extra comfort
- Apron fastening at back collar



QUALITY: 50/50% polyester/cotton – 190 g/m²
STOCK SIZES: XS - 4XL (5XL - 6XL special order)
CERTIFICERING & OUR ICONS:



STANDARD
100
2076-306
DTI
www.oeko-tex.com



FINISHED MEASURES BEFORE WASHING:

	Stamping size	2XS	XS	S	M	L	XL	2XL	3XL	4XL	5XL	6XL	Tolerance
A	1/2 Chest width	46,5	50,2	54	57,7	61,6	65,4	69,2	73	76,8	80,6	84,3	+/- 1,5 cm
B	1/2 Bottom width	47,7	51,7	55,8	59,8	63,8	67,8	71,8	75,8	79,8	83,8	87,8	+/- 1,5 cm
C	Back length	73	73	75	75	75	77	77	79	79	79	79	+/- 1,5 cm
D	Sleeve length	55	57	59	61	63	65	66	67	68	69	70	+/- 1,0 cm

Please note: Final measures will depend on tolerance in garment making (See above) and measuring method (+/- 0.5 cm)

Also note: Washing and drying conditions in industrial laundering can further more give a shrinkage up to 3-5% (Depending of material)

All models meet the requirements industrial laundry. Washing instructions on our homepage www.nybo.com

DOMESTIC LAUNDERING:

White: Black:

PURVEYOR TO H. M. THE QUEEN OF DENMARK
NYBO
 WORKWEAR SINCE 1962

