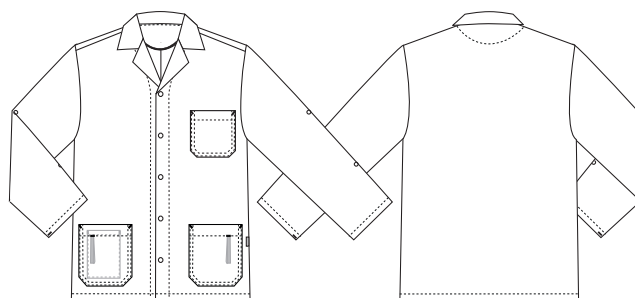


Good Night

5160119 PJ JACKET (Ordernumber: 5160119-0203)

Casual unisex top designed to look like PJ jacket, with press button at front closure. Large chest pocket and two roomy hip pockets with key straps inside. Mobile pocket placed inside right hip pocket. The top has a good length covering lower back in all situations. Long sleeves with functional turn-up detail and press button to secure sleeve length above elbow for hygiene purpose. Fit is classic and roomy, suitable for different body types.



COLOURS:



0203-Blue/Tan

FACTS:

- One chest pocket
- Two roomy hip pockets with key straps
- One mobile pocket inside hip pocket
- Long sleeves with turn-up detail, secured above elbow
- Functional and flattering length, covering hip area and back
- Super soft and highly durable fabric
- Tested and proven high breathability



QUALITY: 50/50% polyester/cotton - 140 g/m²
STOCK SIZES: XS - 4XL (5XL - 6XL special order)
CERTIFICERING & OUR ICONS:



STANDARD
100
2076-306
DTI
www.oeko-tex.com



FINISHED MEASURES BEFORE WASHING:

	Sizes	2XS	XS	S	M	L	XL	2XL	3XL	4XL	5XL	6XL	Tolerance
A	1/2 chest width	46.0	50.0	54.0	58.0	62.0	67.0	72.0	77.0	82.0	87.0	92.0	+/- 1,0 cm
B	1/2 bottom width	46.0	50.0	54.0	58.0	62.0	67.0	72.0	77.0	82.0	87.0	92.0	+/- 1,0 cm
C	Back length	69.0	70.0	71.0	72.0	73.0	74.0	75.0	76.0	77.0	78.0	79.0	+/- 1,5 cm
D1	1/2 waist width	46.0	50.0	54.0	58.0	62.0	67.0	72.0	77.0	82.0	87.0	92.0	+/- 0,5 cm
E	Sleeve length	59.2	59.8	60.4	61.0	61.6	62.3	63.0	63.7	64.4	65.1	65.8	+/- 1,0 cm

2,5% For shrink

Please note: Final measures will depend on tolerance in garment making (See above) and measuring method (+/- 0.5 cm)
Also note: Washing and drying conditions in industrial laundering can further more give a shrinkage up to 3-5% (Depending of material)
All models meet the requirements industrial laundry. Washing instructions on our homepage www.nybo.com

DOMESTIC LAUNDERING:



PURVEYOR TO H. M. THE QUEEN OF DENMARK

NYBO
WORKWEAR SINCE 1962