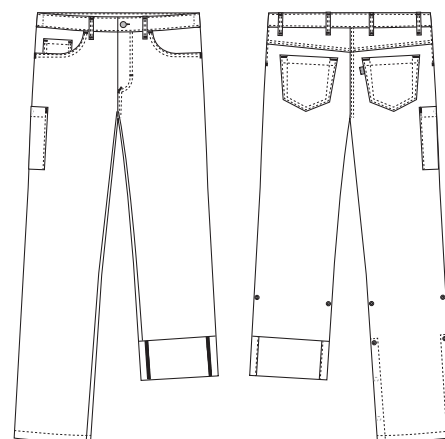


Super Cool

2051742 MEN'S JEANS - 190 G/M²
 (Ordernumber: 2051742-0011)
 Also available in length +10 cm.

These flexible and light weight men's jeans in classic 5-pocket style have a great, youthful fit, suitable for men of all ages and women looking for unisex fit. Inside back of waistband is adjustable elastic for optimal comfort in work situations. Belt loops placed close to the deep and roomy front pockets are highly functional for e.g., key chains and ID cards. The discreet thigh pocket, with extra volume and press button closure, is well-placed so there is easy access during a busy day. Adjustable leg length, with functional roll-up detailing, makes these jeans a perfect choice for different seasons and for daily wear both indoors and light wear outdoors.



COLOURS:



0011-Navy

FACTS:

- Classic 5-pocket style.
- Waistband with button and zipper at front.
- Adjustable elastic in the back of waistband.
- Moderate waist height.
- Cool jeans fit also suitable for unisex styling.
- Deep front pockets with extra room and easy access.
- Two jeans back pockets.
- One thigh pocket with press button closure. Pocket size fits modern mobile phones and devises.
- Adjustable inseam length with practical press button detail, to accommodate all seasons.

QUALITY: 63/34/3% polyester/cotton/EOL stretch – 190 g/m²

STOCK SIZES: XS - 4XL

CERTIFICERING & OUR ICONS:



STANDARD 100
2076-306
DTI

www.oeko-tex.com



STeP

www.oeko-tex.com



MADE IN GREEN
CB3VTM7MXY
DTI

www.oeko-tex.com



amfori
Trade with purpose



FINISHED MEASURES BEFORE WASHING:

| | Stamping size | 2XS | XS | S | M | L | XL | 2XL | 3XL | 4XL | 5XL | 6XL | Tolerance |
|------------|-----------------------------|-----|-----|-----|-----|-----|-----|-----|-----|-----|-----|-----|------------|
| A | 1/2 Waist width | 33 | 37 | 41 | 45 | 49 | 53 | 57 | 61 | 65 | 69 | 73 | +/- 1,5 cm |
| B | 1/2 Hip width | 43 | 47 | 51 | 55 | 59 | 63 | 67 | 71 | 75 | 79 | 83 | +/- 1,5 cm |
| E1* | Rise (Help measure for hip) | 16 | 17 | 18 | 19 | 20 | 21 | 22 | 23 | 24 | 25 | 26 | |
| C | Side length | 100 | 101 | 102 | 103 | 104 | 105 | 106 | 107 | 108 | 109 | 110 | +/- 2,0 cm |
| C | Side length -10 | 90 | 91 | 92 | 93 | 94 | 95 | 96 | 97 | 98 | 99 | 100 | +/- 2,0 cm |
| C | Side length +10 | 110 | 111 | 112 | 113 | 114 | 115 | 116 | 117 | 118 | 119 | 120 | +/- 2,0 cm |
| D | Inseam length | 84 | 84 | 84 | 84 | 84 | 84 | 84 | 84 | 84 | 84 | 84 | +/- 1,5 cm |
| D | Inseam length -10 | 74 | 74 | 74 | 74 | 74 | 74 | 74 | 74 | 74 | 74 | 74 | +/- 1,5 cm |
| D | Inseam length +10 | 94 | 94 | 94 | 94 | 94 | 94 | 94 | 94 | 94 | 94 | 94 | +/- 1,5 cm |

Please note: Final measures will depend on tolerance in garment making (See above) and measuring method (+/- 0.5 cm)
 Also note: Washing and drying conditions in industrial laundering can further more give a shrinkage up to 3-5% (Depending of material)
 All models meet the requirements industrial laundry. Washing instructions on our homepage www.nybo.com

DOMESTIC LAUNDERING:



PURVEYOR TO H. M. THE QUEEN OF DENMARK

NYBO
WORKWEAR SINCE 1962

