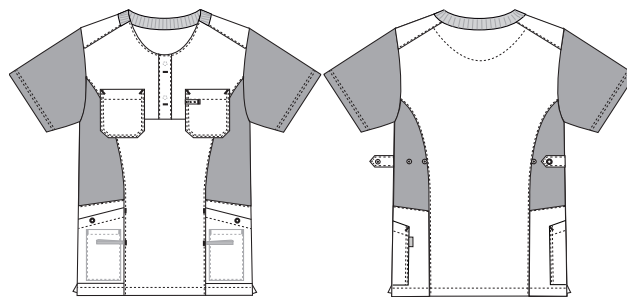


# Sporty Mix

## 5470889 UNISEX SMOCK (Ordernumber: 5470889-0013)

Roomy unisex smock with hidden press button at front closure and soft ribbing at neck. Stretchability at front and in back gives nice flexibility. Adjustable straps at side to secure individual shaping of fit makes this garment suitable for several body types in unisex and feminine silhouettes. Two large chest pockets with a hidden pen-strap and a visible strap for attaching ID-cards adds extra comfort and functionality. Roomy and closable hip pockets with key straps and large integrated pockets for mobile phones. The smock has a good length covering lower back in all situations. Slits at sides adds to flexibility and movement.



### COLOURS:



0011-Navy 0013-Light blue 0049-Grey 0053-Light green 0054-Dark green 0064-Bordeaux

### FACTS:

- Sleeves and side panels in light weight, soft and sustainable piqué with wicker effect and cotton-rich inside.
- Engineered stretch at front and back.
- Soft, sustainable rib at neck opening.
- Hidden press button at front closure.
- Closable hip pockets with press buttons, extra-large mobile pockets, and key straps.
- Two chest pockets. One pocket has hidden pen strap, and visible strap for ID cards.
- Straps at side for adjustment of back.
- Functional and presentable back length, covering hip area nicely.
- Slits at side seams.
- Tested and proven high breathability.

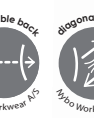


**QUALITY:** 50/50% polyester/BCI cotton - 140 g/m<sup>2</sup>

Piqué in 50/50% polyester/BCI cotton - 150 g/m<sup>2</sup>

**STOCK SIZES:** XS - 4XL (5XL - 6XL special order)

**CERTIFICERING & OUR ICONS:**



### FINISHED MEASURES BEFORE WASHING:

	Stamping size	XXS	XS	S	M	L	XL	2XL	3XL	4XL	5XL	6XL	Tolerance
A	1/2 Chest width	47	51	55	59	63	68	73	78	83	88	93	+/- 1,5 cm
B	1/2 Bottom width	49	53	57	61	65	70	75	80	85	90	95	+/- 1,5 cm
C	Back length	74,5	75,5	76,5	77,5	78,5	79,5	80,5	81,5	82,5	83,5	84,5	+/- 1,5 cm
D	Sleeve length	25,5	26,5	27,5	28,5	29,5	30,5	31,5	32,5	33,5	34,5	35,5	+/- 1,0 cm

Please note: Final measures will depend on tolerance in garment making (See above) and measuring method (+/- 0.5 cm)

Also note: Washing and drying conditions in industrial laundering can further more give a shrinkage up to 3-5% (Depending of material)

All models meet the requirements industrial laundry. Washing instructions on our homepage [www.nybo.com](http://www.nybo.com)

### DOMESTIC LAUNDERING:

