

Good Night

5050549 PULL-ON TROUSERS

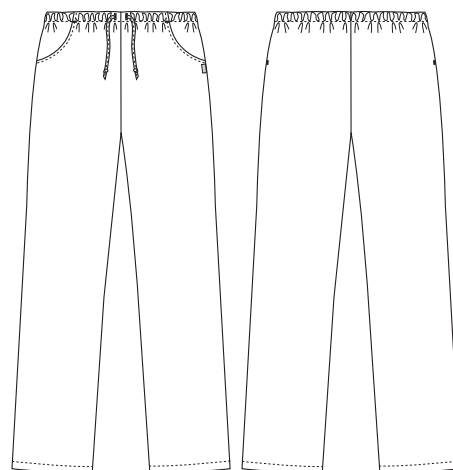
(Ordernumber: 5050549-0203)

All-round and practical unisex pull-on trousers. The style has elastic and drawstring at waist, and deep front pockets. Fit is classic and roomy, suitable for different body types.

COLOURS:



0203-Blue/Tan



FACTS:

- Two roomy front pockets
- Practical drawstring at waist for individual adjustment
- Casual and roomy fit
- Super soft and highly durable fabric
- Tested and proven high breathability

QUALITY: 50/50% polyester/cotton - 140 g/m²

STOCK SIZES: XS - 4XL

CERTIFICERING & OUR ICONS:



STANDARD

100

2076-306
DTI

www.oeko-tex.com



SA 8006



FINISHED MEASURES BEFORE WASHING:

	Stamp size	3XS	2XS	XS	S	M	L	XL	2XL	3XL	4XL	5XL	6XL	7XL	Tolerance
A	1/2 Waist width	29.8	31.9	34.0	36.1	38.5	42.0	45.9	49.7	53.6	57.4	61.3	65.1	69.0	+/- 1,5 cm
AZ	1/2 Waist width stretched	42.5	45.5	48.5	51.5	55.0	60.0	65.5	71.0	76.5	82.0	87.5	93.0	98.5	+/- 1,5 cm
B	1/2 Hip width	43.0	46.0	49.0	52.0	55.5	59.0	64.0	69.0	74.0	79.0	84.0	89.0	94.0	+/- 1,0 cm
C	Side length	102.0	103.0	104.0	105.0	106.0	107.7	109.3	111.0	112.6	114.3	115.9	117.6	119.2	+/- 1,5 cm
D	Inseam length	82.5	82.5	82.5	82.5	82.5	82.5	82.5	82.5	82.5	82.5	82.5	82.5	82.5	+/- 1,5 cm

2,5% For shrink

* Tolerance for models with elastic is 1,5 cm

Please note: Final measures will depend on tolerance in garment making (See above) and measuring method (+/- 0.5 cm)
Also note: Washing and drying conditions in industrial laundering can further more give a shrinkage up to 3-5% (Depending of material)
All models meet the requirements industrial laundry. Washing instructions on our homepage www.nybo.com

DOMESTIC LAUNDERING:



PURVEYOR TO H. M. THE QUEEN OF DENMARK

NYBO

WORKWEAR SINCE 1962