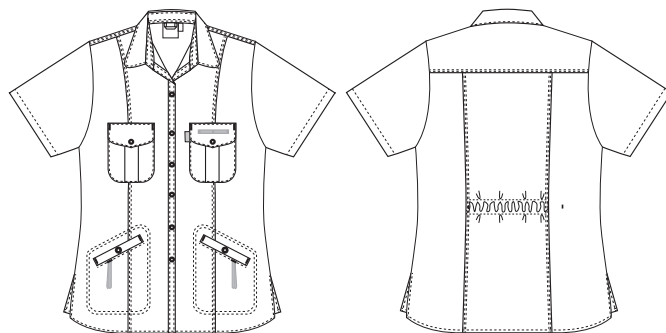


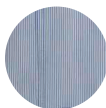
Fresh

1360629 CASUAL LADIE'S TUNIC/SHIRT (Ordernumber: 1360629-0605)

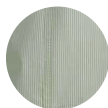
This model is slightly shaped at the waist, contributing to a visually slimming effect. Extra shaping is also possible with elastic adjustment at the back. However, the cut is still roomy, allowing the wearer freedom of movement. Offers a good length that comes down and covers the back. It has two practical hip pockets with a key loop at the bottom and space for a notepad or a smartphone, for example, and two breast pockets with pen loop on the left side. This style has a smart lapel.



COLOURS:



0200-
Blue striped



0501-
Green striped



0605-
Pink striped

FACTS:

- Inner key strap inside hip pockets
- V-shaped necklines for better, slimmer look and comfort
- Long side slits for better comfort
- Adjustment on the back at the ladies' models
- Ladies' models slightly shaped at the waist, but still with roomy cut
- Extra light fabric
- Smart spacious pockets
- High comfort fabric
- Beautiful pastel range of a smoothly striped fabric



QUALITY: 50/50% polyester/cotton - 140 g/m²
STOCK SIZES: XS - 4XL (5XL - 6XL special order)
CERTIFICERING & OUR ICONS:



STANDARD
100
2076-306
DTI
www.oeko-tex.com



FINISHED MEASURES BEFORE WASHING:

	Stamping size	2XS/28-30	XS/32-34	S/36-38	M/40-42	L/44-46	XL/48-50	2XL/52-54	3XL/56-58	4XL/60-62	5XL/64-66	Tolerance
A	1/2 Chest width	44	48	52	56	60	66	72	78	84	90	+/- 1,5 cm
B	1/2 Bottom width	49	52	55,5	58,5	61,5	66,5	71,5	76,5	81,5	86,5	+/- 1,5 cm
C	Back length	70	71	72	73	74	75	76	77	78	79	+/- 1,5 cm
D	Sleeve length	20	21	22	23	24	25	25,5	26,5	27	28	+/- 1,0 cm

Please note: Final measures will depend on tolerance in garment making (See above) and measuring method (+/- 0.5 cm)
Also note: Washing and drying conditions in industrial laundering can further more give a shrinkage up to 3-5% (Depending of material)
All models meet the requirements industrial laundry. Washing instructions on our homepage www.nybo.com

DOMESTIC LAUNDERING:



PURVEYOR TO H. M. THE QUEEN OF DENMARK
NYBO
WORKWEAR SINCE 1962

