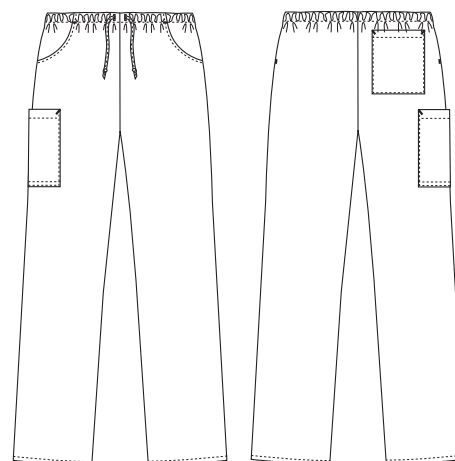


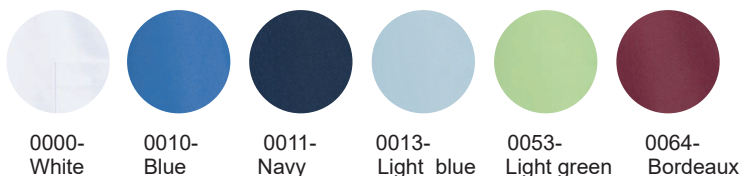
Heart

1051391 PULL-ON (Ordernumber: 1051391-0000)

These pull-on trousers have a great cut with relaxed and comfortable fit. The style has elastic waist and drawstring for individual adjustment and high flexibility. Two roomy front pockets, a practical back pocket and the large thigh pocket secure high functionality.



COLOURS:



FACTS:

- Classic silhouette and roomy fit
- Elastic waist with drawstring for individual adjustment
- Two roomy front pockets
- One practical back pocket
- One large thigh pocket
- Quality tested and proven very high breathability



QUALITY: 50/50% polyester/TENCEL™ - 225 g/m²

STOCK SIZES: XS - 4XL

CERTIFICERING & OUR ICONS:



FINISHED MEASURES BEFORE WASHING:

| | Stamping size | 2XS | XS | S | M | L | XL | 2XL | 3XL | 4XL | 5XL | 6XL | Tolerance |
|------------|-----------------------------|------|-----|------|------|-------|------|-------|------|------|-------|------|------------|
| A | 1/2 Waist width | 31,9 | 34 | 36,1 | 38,5 | 42 | 45,9 | 49,7 | 53,6 | 57,4 | 61,3 | 65,1 | +/- 2,0 cm |
| B | 1/2 Hip width | 13 | 49 | 52 | 55,5 | 59 | 64 | 69 | 74 | 79 | 79 | 89 | +/- 1,5 cm |
| E1* | Rise (Help measure for hip) | 21 | 22 | 23 | 24 | 25 | 26,4 | 27,7 | 29,1 | 30,4 | 31,8 | 33,1 | |
| C | Side length | 100 | 101 | 102 | 103 | 104,5 | 106 | 107,5 | 109 | 111 | 112,5 | 114 | +/- 2,0 cm |
| D | Inseam length | 79 | 79 | 79 | 79 | 79 | 79 | 79 | 79 | 79 | 79 | 79 | +/- 1,5 cm |

Please note: Final measures will depend on tolerance in garment making (See above) and measuring method (+/- 0.5 cm)
 Also note: Washing and drying conditions in industrial laundering can further more give a shrinkage up to 3-5% (Depending of material)
 All models meet the requirements industrial laundry. Washing instructions on our homepage www.nybo.com

DOMESTIC LAUNDERING:



PURVEYOR TO H. M. THE QUEEN OF DENMARK

NYBO
WORKWEAR SINCE 1962

