

# Sporty T800

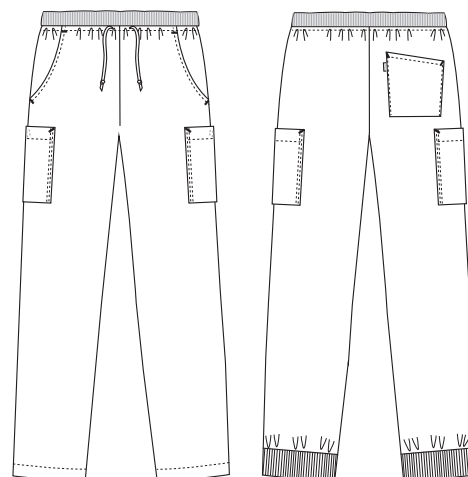
## 5050609 UNISEX PULL-ON TROUSERS (Ordernumber: 5050609-0011)

Smart pull-on trousers inspired by street style; the fit is relaxed around the waist, hips, and thighs, with a slim silhouette in the legs. This model is a perfect choice for both women and men. It is also suitable for early stages of pregnancy. The elastic waistband features a soft rib and drawstring. Stylish slanted front pockets, jeans-inspired back pockets, and two large lockable thigh pockets with extra volume provide plenty of space for carrying tablets, phones, and other equipment throughout a full workday. The trousers are designed with a focus on mobility and comfort, ensuring the fit allows the user to bend (squat) without the trousers slipping down at the back. This model is an excellent choice for multiple seasons and daily use, both indoors and outdoors.

### COLOURS:



0011-Navy



### FACTS:

- Pull-on model with a casual fit
- Adjustable waist with wide elastic, soft ribbed material, and drawstring
- Moderate/high waist
- Spacious fit around the hips and thighs, with narrower legs
- Unisex fit
- Deep slanted front pockets with extra space and easy access
- Two jeans-style back pockets
- Two large lockable thigh pockets with extra volume

**QUALITY:** 100% polyester T800 stretch – 120 g/m<sup>2</sup>

**STOCK SIZES:** XS - 4XL

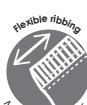
**CERTIFICERING & OUR ICONS:**



**STANDARD  
100**

2076-306  
DTI

www.oeko-tex.com



### FINISHED MEASURES BEFORE WASHING:

	Stamping size	2XS	XS	S	M	L	XL	2XL	3XL	4XL	5XL	6XL	Tolerance
A	1/2 Waist width	31,2	33,3	35,4	37,8	41,3	45,2	49	52,9	56,7	60,6	68,3	+/- 2,0 cm
B	1/2 Hip width	44,6	47,5	50,5	54	57,5	62,5	67,5	72,5	77,5	82,5	92,5	+/- 1,5 cm
E1	Rise (Help measure for hip)	14	14,5	15	15,5	16,1	16,7	17,3	17,9	18,5	19,1	20,3	
C	Side length	97	98	99	100	101,7	103,3	105	106,6	108,3	109,9	113,2	+/- 2,0 cm
C	Side length -10 (211)	87	88	89	90	91,7	93,3	95	96,6	98,3	99,9	103,2	+/- 2,0 cm
C	Side length +10 (202)	107	108	109	110	111,7	113,3	115	116,6	118,3	119,9	123,2	+/- 2,0 cm
D	Inseam length	78	78	78	78	78	78	78	78	78	78	78	+/- 1,5 cm
D	Inseam length -10 (211)	68	68	68	68	68	68	68	68	68	68	68	+/- 1,5 cm
D	Inseam length +10 (202)	88	88	88	88	88	88	88	88	88	88	88	+/- 1,5 cm

Please note: Final measures will depend on tolerance in garment making (See above) and measuring method (+/- 0.5 cm)

Also note: Washing and drying conditions in industrial laundering can further more give a shrinkage up to 3-5% (Depending of material)

All models meet the requirements industrial laundry. Washing instructions on our homepage [www.nybo.com](http://www.nybo.com)

### DOMESTIC LAUNDERING:



PURVEYOR TO H. M. THE QUEEN OF DENMARK

**NYBO**  
WORKWEAR SINCE 1962

