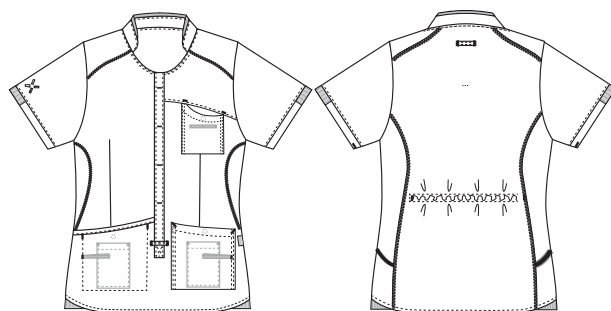


# Sporty

## 1470279 CASUAL AND TRENDY LADIES' SMOCK (Ordernumber: 1470279-0011)

Slightly waisted ladies' smock with a large opening in the front, which enables the user to drag it over the legs and to step out of it. This ensures that there is no contact between the contaminated clothes and the user's facial area. The smock has elastic adjustment at the back to allow extra shaping at the waist. The shirt is designed with a breast pocket and both hip pockets have integrated pockets for mobile phones and key straps. All pockets are fitted with press buttons to secure pocket contents. The shirt has a decent length that covers the lower back well in all situations. The shirt is designed with a rounded bottom edge with ribbing in the sides for extra flexibility.



### COLOURS:



0010-Blue



0011-Navy



0040-Grey



0050-Green

0054-  
Dark Green

0064-Bordeaux



### FACTS:

- Key straps inside the hip pockets
- Pencil strap inside the chest pocket
- Mobile and chest pocket which meet users' present needs
- All pockets are fitted with press buttons to secure pocket contents
- Stretchable back with inner waist adjustment in the ladies' models
- Sporty lines and flatlock in contrast which gives a smart look
- Second quality in stretch for better comfort
- Tested and proven very high breathability



**QUALITY:** 50/50% polyester/BCI cotton - 140 g/m<sup>2</sup>  
**STOCK SIZES:** XS - 4XL (5XL - 6XL special order)  
**CERTIFICERING & OUR ICONS:**



**STANDARD**  
100  
2076-306  
DTI

www.oeko-tex.com



### FINISHED MEASURES BEFORE WASHING:

		34	38	42	46	50	54	58	62	
	Stamping size	XS/32-34	S/36-38	M/40-42	L/44-46	XL/48-50	2XL/52-54	3XL/56-58	4XL/60-62	Tolerance
<b>A</b>	1/2 Chest width	48	52	56	60	66	72	78	84	+/- 1,5 cm
<b>B</b>	1/2 Bottom width	52	55,5	58,5	61,5	66,5	71,5	76,5	81,5	+/- 1,5 cm
<b>C</b>	Back length	71,8	72,8	73,8	74,8	75,8	76,8	77,8	78,8	+/- 1,5 cm
<b>D</b>	Sleeve length	21,8	22,4	23	23,6	24,2	24,8	25,4	26	+/- 1,0 cm

Please note: Final measures will depend on tolerance in garment making (See above) and measuring method (+/- 0.5 cm)  
Also note: Washing and drying conditions in industrial laundering can further more give a shrinkage up to 3-5% (Depending of material)  
All models meet the requirements industrial laundry. Washing instructions on our homepage [www.nybo.com](http://www.nybo.com)

### DOMESTIC LAUNDERING:



PURVEYOR TO H. M. THE QUEEN OF DENMARK

**NYBO**  
WORKWEAR SINCE 1962

These models have been developed by NYBO Workwear A/S – We reserve the rights of production of these models – Not to be copied.

