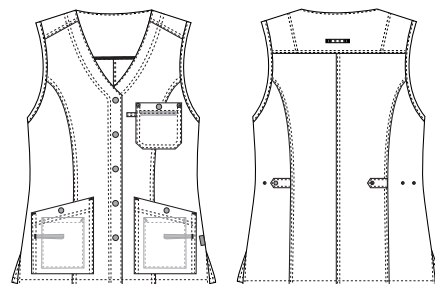


Super Cool

1500502 LADIES WAISTCOAT - 190 G/M² (Ordernumber: 1500502-0011)

A versatile and well-fitting waistcoat with flattering V-neckline specially created to feel comfortable around neck and back area when carrying needed tools and devises during a busy work day. Big closable hip pockets with 3D-effect for easy access and volume, equipped with practical inner strap for keys and other essential devises. The roomy and closable chest pocket with inner pen strap and visible strap for ID card is perfectly fitted to accommodate pocket protectors. With a generous back length covering hip area and slits at sides, this waistcoat is a good choice for most users. At back waist are adjustment straps so user can create an individual fit for perfect shape.



COLOURS:



0011-Navy

FACTS:

- Practical press button closure at front.
- Roomy hip pockets with press button closure and straps for ID-cards and keys.
- Mobile pocket inside one hip pocket.
- Roomy chest pocket with press button closure, pen strap inside and visible strap to attach ID card, devises etc.
- Adjustment straps at back to optimize fit.
- Slits at sides for increased comfort and better movement.

QUALITY: 63/34/3% polyester/cotton/EOL stretch - 190 g/m²

STOCK SIZES: XS - 4XL

CERTIFICERING & OUR ICONS:



STANDARD
100
2076-306
DTI

www.oeko-tex.com



STeP

www.oeko-tex.com



MADE IN
GREEN
CB3VTM7MXY
DTI

www.oeko-tex.com



Nybo Workwear A/S



Nybo Workwear A/S



Nybo Workwear A/S



Nybo Workwear A/S



amfori 
Trade with purpose



FINISHED MEASURES BEFORE WASHING:

		30	34	38	42	46	50	54	58	62	66	70	
	Stamping size	2XS	XS	S	M	L	XL	2XL	3XL	4XL	5XL	6XL	Tolerance
A	1/2 Chest width	43	47	51	55	59	65	71	77	83	89	95	+/- 1,5 cm
B	1/2 Bottom width	46	50	54	58	62	68	74	80	86	92	98	+/- 1,5 cm
C	Back length	72	72	75	75	75	78	78	78	80	80	80	+/- 1,5 cm

Please note: Final measures will depend on tolerance in garment making (See above) and measuring method (+/- 0.5 cm)

Also note: Washing and drying conditions in industrial laundering can further more give a shrinkage up to 3-5% (Depending of material)

All models meet the requirements industrial laundry. Washing instructions on our homepage www.nybo.com

DOMESTIC LAUNDERING:




PURVEYOR TO H. M. THE QUEEN OF DENMARK

NYBO
WORKWEAR SINCE 1962

