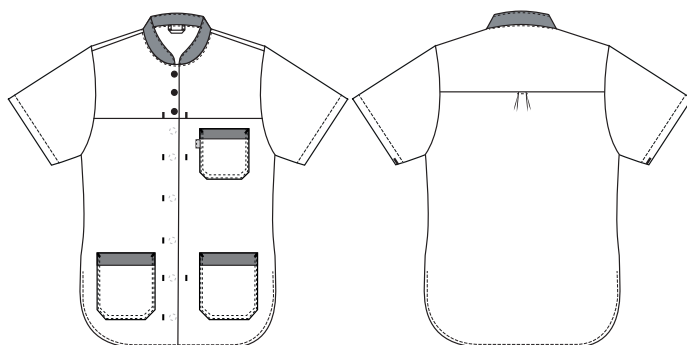


Cloud

1470279 LADIES' SMOCK (Ordernumber: 1470279-0151)

Ladie's tunic with two spacious hip pockets and a chest pocket on the left chest. The tunic has slits on the sides, which gives a good fit and greater freedom of movement.



COLOURS:



0152-White-
Mint/White



0151-White-
Light-Blue/White

FACTS:

- Many different details
- Good spacious pockets
- Concealed placket
- Neck strap inside
- Adjustable waist on the back for some models
- Available also with short sleeves

QUALITY: 50/50% polyester/cotton - 140 g/m²
STOCK SIZES: XS - 4XL (5XL - 6XL special order)
CERTIFICERING & OUR ICONS:



STANDARD
100
2076-306
DTI

www.oeko-tex.com



STeP



MADE IN
GREEN
CB3VTM7MXY
DTI

www.oeko-tex.com



FINISHED MEASURES BEFORE WASHING:

		34	38	42	46	50	54	58	62	
	Stamping size	XS	S	M	L	XL	2XL	3XL	4XL	Tolerance
A	1/2 Chest width	52,5	56,5	60,5	65	71	77	83	89	+/- 1,5 cm
B	1/2 Bottom width	53,5	57,5	61,5	66,5	72,5	78,5	83,5	90,5	+/- 1,5 cm
C	Back length	83,5	83,5	83,5	83,5	83,5	83,5	83,5	83,5	+/- 1,5 cm
D	Sleeve length	26,5	27,5	28,5	29,5	30,5	31,5	32	33,5	+/- 1,0 cm

Please note: Final measures will depend on tolerance in garment making (See above) and measuring method (+/- 0.5 cm)
Also note: Washing and drying conditions in industrial laundering can further more give a shrinkage up to 3-5% (Depending of material)
All models meet the requirements industrial laundry. Washing instructions on our homepage www.nybo.com

DOMESTIC LAUNDERING:



PURVEYOR TO H. M. THE QUEEN OF DENMARK

NYBO
WORKWEAR SINCE 1962

