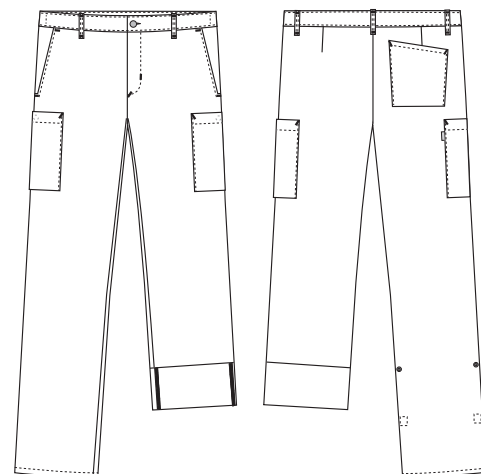


# Sporty T800

## 2051809 UNISEX/MEN'S STRETCH PANTS (Ordernumber: 2051809-0011)

These flexible and light weight multi stretch pants are a perfect match when the need is a great, youthful fit, suitable for men of all ages and women looking for unisex fit. Inside the back of waistband is adjustable elastic for optimal comfort in work situations. Belt loops placed close to the deep and roomy front pockets are highly functional for e.g., key chains and ID cards. The two large, yet discreet thigh pockets, with extra volume and press button closure, are well-placed so there is easy access during a busy day. Adjustable leg length, with functional roll-up detailing, makes these pants a perfect choice for different seasons and for daily wear both indoors and light wear outdoors.

Same style in 94 cm inseam unhemmed: 2051819



### COLOURS:



0011-Navy

### FACTS:

- Elegant and minimalistic appearance.
- Waistband with button and zipper at front.
- Adjustable elastic in the back of waistband.
- Belt loops accommodating key chains etc.
- Moderate waist height.
- Deep front pockets with extra room and easy access.
- One back pocket.
- Two large thigh pockets with press button closure. Pocket size fits modern mobile phones and devices.
- Adjustable inseam length with easy-access press button detail, to accommodate all seasons.
- 4-way stretch quality with integrated cooling effect.

**QUALITY:** 100% polyester T800 stretch – 120 g/m<sup>2</sup>

**STOCK SIZES:** XS - 4XL

**CERTIFICERING & OUR ICONS:**



STANDARD  
100

2076-306  
DT1

www.oeko-tex.com



### FINISHED MEASURES BEFORE WASHING:

	Stamping size	2XS	XS	S	M	L	XL	2XL	3XL	4XL	5XL	6XL	Tolerance
<b>A</b>	1/2 Waist width	33	37	41	45	50	55	60	65	70	75	80	+/- 1,5 cm
<b>B</b>	1/2 Hip width	42	46	50	54	58	62	66	70	74	78	82	+/- 1,5 cm
<b>E1*</b>	Rise (Help measure for hip)	11,8	12,2	12,6	13	13,4	13,8	14,2	14,6	15	15,4	15,8	
<b>C</b>	Side length	100,4	101,3	102,1	103	104	105	106	107	108	109	110	+/- 2,0 cm
<b>D</b>	Inseam length	81	81	81	81	81	81	81	81	81	81	81	+/- 1,5 cm

Please note: Final measures will depend on tolerance in garment making (See above) and measuring method (+/- 0.5 cm)  
Also note: Washing and drying conditions in industrial laundering can further more give a shrinkage up to 3-5% (Depending of material)  
All models meet the requirements industrial laundry. Washing instructions on our homepage [www.nybo.com](http://www.nybo.com)

### DOMESTIC LAUNDERING:



PURVEYOR TO H. M. THE QUEEN OF DENMARK

**NYBO**

WORKWEAR SINCE 1962

