

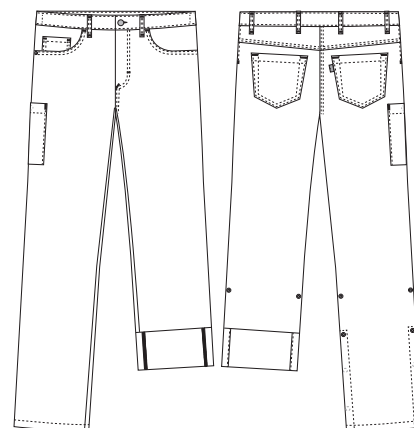
# Super Cool

## 2051732 MEN'S JEANS - 190 G/M<sup>2</sup>

(Ordernumber: 2051732-0011)

Also available in length: short -10 cm, long +10 cm.

These flexible and light weight men's jeans in classic 5-pocket style have a great, youthful fit, suitable for men of all ages and women looking for unisex fit. Inside back of waistband is adjustable elastic for optimal comfort in work situations. Belt loops placed close to the deep and roomy front pockets are highly functional for e.g., key chains and ID cards. The discreet thigh pocket, with extra volume and press button closure, is well-placed so there is easy access during a busy day. Adjustable leg length, with functional roll-up detailing, makes these jeans a perfect choice for different seasons and for daily wear both indoors and light wear outdoors.



### COLOURS:



0011-Navy

### FACTS:

- Classic 5-pocket style.
- Waistband with button and zipper at front.
- Adjustable elastic in the back of waistband.
- Moderate waist height.
- Cool jeans fit also suitable for unisex styling.
- Deep front pockets with extra room and easy access.
- Two jeans back pockets.
- One thigh pocket with press button closure. Pocket size fits modern mobile phones and devises.
- Adjustable inseam length with practical press button detail, to accommodate all seasons.

**QUALITY:** 63/34/3% polyester/cotton/EOL stretch – 190 g/m<sup>2</sup>

**STOCK SIZES:** XS - 4XL

**CERTIFICERING & OUR ICONS:**



STANDARD  
100  
2076-306  
DTI

www.oeko-tex.com



STeP

www.oeko-tex.com



MADE IN  
GREEN  
CB3VTM7MXY  
DTI

www.oeko-tex.com



key strap  
Nybo Workwear A/S



adjustable length  
Nybo Workwear A/S



stretch  
Nybo Workwear A/S



mobile pocket  
Nybo Workwear A/S



adjustable waist  
Nybo Workwear A/S



**amfori**   
Trade with purpose



### FINISHED MEASURES BEFORE WASHING:

	Stamping size	2XS	XS	S	M	L	XL	2XL	3XL	4XL	5XL	6XL	Tolerance
<b>A</b>	1/2 Waist width	33	37	41	45	49	53	57	61	65	69	73	+/- 1,5 cm
<b>B</b>	1/2 Hip width	43	47	51	55	59	63	67	71	75	79	83	+/- 1,5 cm
<b>E1*</b>	Rise (Help measure for hip)	16	17	18	19	20	21	22	23	24	25	26	
<b>C</b>	Side length	100	101	102	103	104	105	106	107	108	109	110	+/- 2,0 cm
<b>C</b>	Side length -10	90	91	92	93	94	95	96	97	98	99	100	+/- 2,0 cm
<b>C</b>	Side length +10	110	111	112	113	114	115	116	117	118	119	120	+/- 2,0 cm
<b>D</b>	Inseam length	84	84	84	84	84	84	84	84	84	84	84	+/- 1,5 cm
<b>D</b>	Inseam length -10	74	74	74	74	74	74	74	74	74	74	74	+/- 1,5 cm
<b>D</b>	Inseam length +10	94	94	94	94	94	94	94	94	94	94	94	+/- 1,5 cm

Please note: Final measures will depend on tolerance in garment making (See above) and measuring method (+/- 0.5 cm)

Also note: Washing and drying conditions in industrial laundering can further more give a shrinkage up to 3-5% (Depending of material)

All models meet the requirements industrial laundry. Washing instructions on our homepage [www.nybo.com](http://www.nybo.com)

### DOMESTIC LAUNDERING:



  
PURVEYOR TO H. M. THE QUEEN OF DENMARK

**NYBO**  
WORKWEAR SINCE 1962

