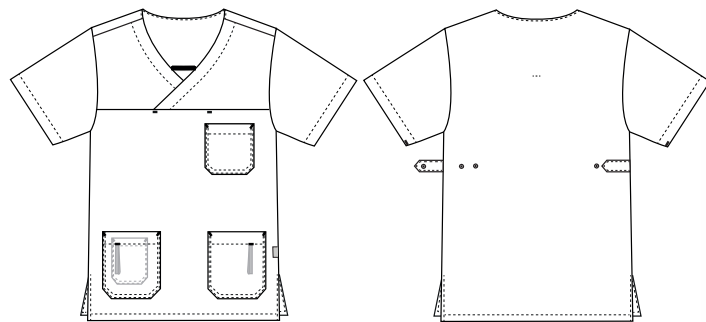


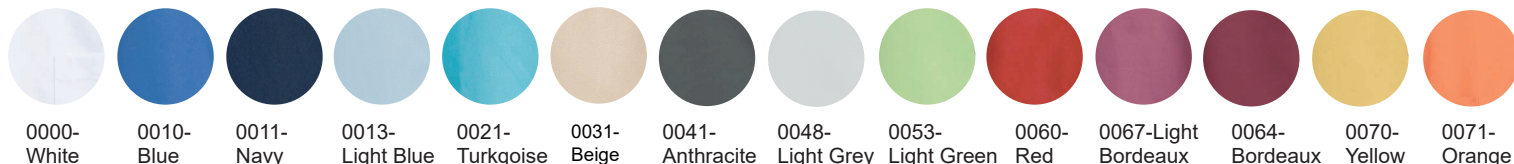
Charisma Premium

5470651 UNISX SMOCK (Ordernumber: 5470651-0000)

The model has long slits in the sides for extra width. The shape is cut straight and covers well at the back. The sleeves cover the upper arms nicely and has a modern and trendy appearance. This smock is made of the new pleasant temperatureregulating fabric contains TENCEL™ Lyocell fibers.



COLOURS:



FACTS:

- Key straps inside the hip pockets
- Pencil strap inside the chest pocket
- Mobile and chest pocket which meet users' present needs
- Slits for better comfort
- Adjustment straps in the unisex model for better freedom of movement
- FlexFix press buttons
- Temperature regulating fabric
- V-neck makes the neck and face appear a little slimmer
- Comes in a wide spectrum of colours, to match different trousers

QUALITY: 50/50% polyester/TENCEL™ Lyocell - 225 g/m²

STOCK SIZES: XS - 4XL (5XL - 6XL special order)

CERTIFICERING & OUR ICONS:



STANDARD
100
2076-306
DTI
www.oeko-tex.com



www.oeko-tex.com

STeP



www.oeko-tex.com

MADE IN
GREEN
CB3VTM7MX
DTI



**GREEN
BUTTON**
GOOD FOR PEOPLE.
GOOD FOR NATURE.



TENCEL™ is a trademark of Lenzing AG.

FINISHED MEASURES BEFORE WASHING:

| | | 40 | 44 | 48 | 52 | 56 | 60 | 64 | 68 | 72 | 76 | 80 | |
|---|------------------|------|------|------|------|------|------|------|------|------|------|------|------------|
| | Stamping size | 2XS | XS | S | M | L | XL | 2XL | 3XL | 4XL | 5XL | 6XL | Tolerance |
| A | 1/2 Chest width | 47 | 51 | 55 | 59 | 63 | 68 | 73 | 78 | 83 | 88 | 93 | +/- 1,5 cm |
| B | 1/2 Bottom width | 48,5 | 52,5 | 56,5 | 60,5 | 64,5 | 69,5 | 74,5 | 79,5 | 84,5 | 89,5 | 94,5 | +/- 1,5 cm |
| C | Back length | 74,5 | 75,5 | 76,5 | 77,5 | 78,5 | 79,5 | 80,5 | 81,5 | 82,5 | 83,5 | 84,5 | +/- 1,5 cm |
| D | Sleeve length | 26 | 27 | 28 | 29 | 30 | 31 | 32 | 33 | 34 | 35 | 36 | +/- 1,0 cm |

Please note: Final measures will depend on tolerance in garment making (See above) and measuring method (+/- 0.5 cm)

Also note: Washing and drying conditions in industrial laundering can further more give a shrinkage up to 3-5% (Depending of material)

All models meet the requirements industrial laundry. Washing instructions on our homepage www.nybo.com

DOMESTIC LAUNDERING:

