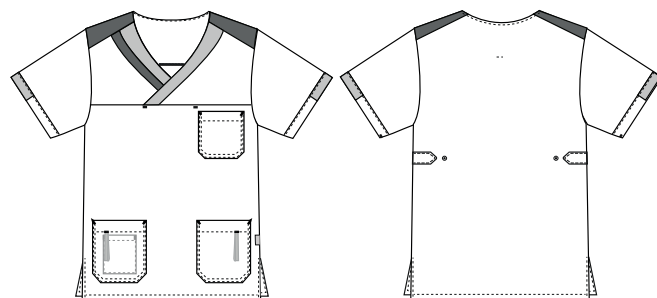


Nova Premium

5470871 UNISEX-SMOCK (Ordernumber: 5470871-0502)

Versatile unisex-smock with good length covering hips nicely. Sleeves cover upper arms with nice modern appearance. The model has long slits at sides for optimal freedom of movement. The model has two hip pockets with key straps. As an extra nice feature, a handy pocket for mobile phone is placed inside right hip pocket.



COLOURS:



0126-White/
Green/
Light Blue



0218-Navy/
Light Green/
Blue



0212-Light
Blue/White/
Green



0502-Light
Green/Navy/
Light Blue



0607-Red/
Navy/
Grey



0604-Bor-
deaux/Red/
Orange

FACTS:

- Two deep hip pockets
- Key straps inside both hip pockets
- Mobile pocket inside one hip pocket
- Adjustable straps at back for versatile fit
- Unisex shape and fit



QUALITY: White: 50/50% polyester/TENCEL™ Lyocell - 225 g/m²
Coloured: 50/50% polyester/TENCEL™ Lyocell - 200 g/m²
STOCK SIZES: XS - 4XL (5XL - 6XL special order)
CERTIFICERING & OUR ICONS:

**GREEN
BUTTON**
GOOD FOR PEOPLE.
GOOD FOR NATURE.



STANDARD
100
2076-306
DTI

www.oeko-tex.com



STeP

www.oeko-tex.com



MADE IN
GREEN
CB3VTM7MX
DTI

www.oeko-tex.com



TENCEL™ is a trademark of Lenzing AG.

FINISHED MEASURES BEFORE WASHING:

		40	44	48	52	56	60	64	68	72	76	80	
	Stamping size	2XS	XS	S	M	L	XL	2XL	3XL	4XL	5XL	6XL	Tolerance
A	1/2 Chest width	47	51	55	59	63	68	73	78	83	88	93	+/- 1,5 cm
B	1/2 Bottom width	48,5	52,5	56,5	60,5	64,5	69,5	74,5	79,5	84,5	89,5	94,5	+/- 1,5 cm
C	Back length	74,5	75,5	76,5	77,5	78,5	79,5	80,5	81,5	82,5	83,5	84,5	+/- 1,5 cm
D	Sleeve length	26	27	28	29	30	31	32	33	34	35	36	+/- 1,0 cm

Please note: Final measures will depend on tolerance in garment making (See above) and measuring method (+/- 0.5 cm)
Also note: Washing and drying conditions in industrial laundering can further more give a shrinkage up to 3-5% (Depending of material)
All models meet the requirements industrial laundry. Washing instructions on our homepage www.nybo.com

DOMESTIC LAUNDERING:



PURVEYOR TO H. M. THE QUEEN OF DENMARK
NYBO
WORKWEAR SINCE 1962

