

# Charisma

## 1470241 DRESS (Ordernumber: 1470241-0063)

Dress with rounded neck opening. The model is beautifully waisted with a convenient length just above the knees. This feminine dress is a stylish fresh alternative to a standard tunic length to be worn with either pants or leggings. The model has one chest pocket and two hip pockets with key straps. As an extra nice feature a handy pocket for the mobile phone is placed inside the right hip pocket.

### COLOURS:



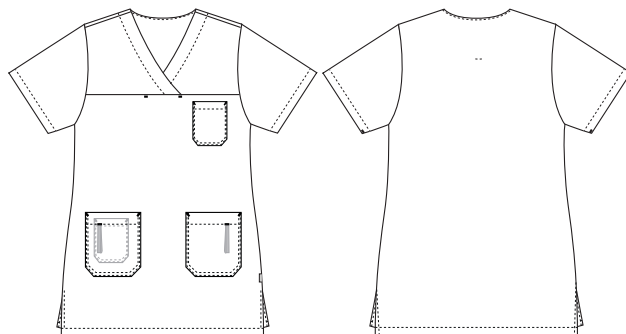
0021-Turquoise

0011-Blue

0053-Light Green

0063-Pink

0064-Bordeaux



### FACTS:

- Key straps inside the hip pockets
- Pencil strap inside the chest pocket
- Mobile and chest pocket which meet users' present needs
- Slits for better comfort
- V-neck makes the neck and face appear a little slimmer
- Comes in a wide spectrum of colours, to match different trousers



**QUALITY:** 50/50% polyester/cotton - 180 g/m<sup>2</sup>  
**STOCK SIZES:** XS - 4XL (5XL - 6XL special order)  
**CERTIFICERING & OUR ICONS:**



STANDARD  
100  
2076-306  
DTI

www.oeko-tex.com



STeP

www.oeko-tex.com



MADE IN  
GREEN  
CB3VTM7MXY  
DTI

www.oeko-tex.com



Nybo Workwear A/S



Nybo Workwear A/S

### FINISHED MEASURES BEFORE WASHING:

		34	38	42	46	50	54	58	62	
	Stamping size	XS	S	M	L	XL	2XL	3XL	4XL	Tolerance
<b>A</b>	1/2 Chest width	46,5	50,5	54,5	59,5	65,5	71,5	77,5	83,5	+/- 1,5 cm
<b>B</b>	1/2 Bottom width	55	57,5	63	68	74	80	86	92	+/- 1,5 cm
<b>C</b>	Back length	86	89	89	89	92	92	95	95	+/- 1,5 cm
<b>D</b>	Sleeve length	27,5	28,5	29,5	30,5	31,5	32,5	33,5	34,5	+/- 1,0 cm

Please note: Final measures will depend on tolerance in garment making (See above) and measuring method (+/- 0.5 cm)  
 Also note: Washing and drying conditions in industrial laundering can further more give a shrinkage up to 3-5% (Depending of material)  
 All models meet the requirements industrial laundry. Washing instructions on our homepage [www.nybo.com](http://www.nybo.com)

### DOMESTIC LAUNDERING:



PURVEYOR TO H. M. THE QUEEN OF DENMARK

**NYBO**

WORKWEAR SINCE 1962

