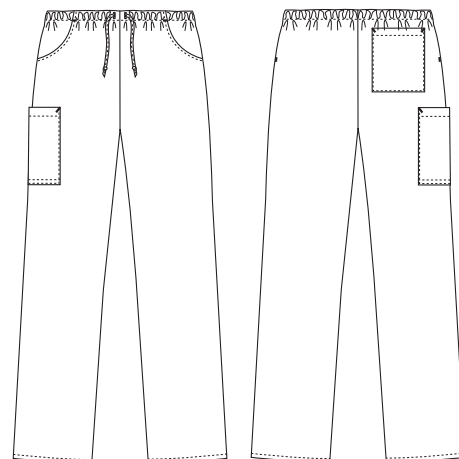


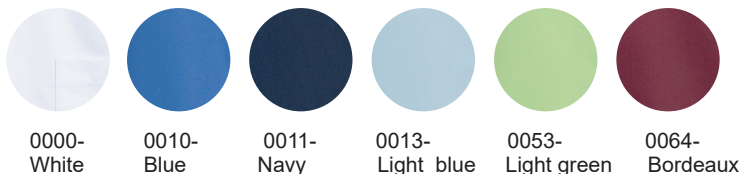
# Heart

## 1051391 PULL-ON (Ordernumber: 1051391-0010)

These pull-on trousers have a great cut with relaxed and comfortable fit. The style has elastic waist and drawstring for individual adjustment and high flexibility. Two roomy front pockets, a practical back pocket and the large thigh pocket secure high functionality.



### COLOURS:



### FACTS:

- Classic silhouette and roomy fit
- Elastic waist with drawstring for individual adjustment
- Two roomy front pockets
- One practical back pocket
- One large thigh pocket
- Quality tested and proven very high breathability



**QUALITY:** 50/50% polyester/TENCEL™ - 195 g/m<sup>2</sup>  
**STOCK SIZES:** XS - 4XL  
**CERTIFICERING & OUR ICONS:**



### FINISHED MEASURES BEFORE WASHING:

	Stamping size	2XS	XS	S	M	L	XL	2XL	3XL	4XL	5XL	6XL	Tolerance
<b>A</b>	1/2 Waist width	31,9	34	36,1	38,5	42	45,9	49,7	53,6	57,4	61,3	65,1	+/- 2,0 cm
<b>B</b>	1/2 Hip width	13	49	52	55,5	59	64	69	74	79	79	89	+/- 1,5 cm
<b>E1*</b>	Rise (Help measure for hip)	21	22	23	24	25	26,4	27,7	29,1	30,4	31,8	33,1	
<b>C</b>	Side length	100	101	102	103	104,5	106	107,5	109	111	112,5	114	+/- 2,0 cm
<b>D</b>	Inseam length	79	79	79	79	79	79	79	79	79	79	79	+/- 1,5 cm

Please note: Final measures will depend on tolerance in garment making (See above) and measuring method (+/- 0.5 cm)  
 Also note: Washing and drying conditions in industrial laundering can further more give a shrinkage up to 3-5% (Depending of material)  
 All models meet the requirements industrial laundry. Washing instructions on our homepage [www.nybo.com](http://www.nybo.com)

### DOMESTIC LAUNDERING:

