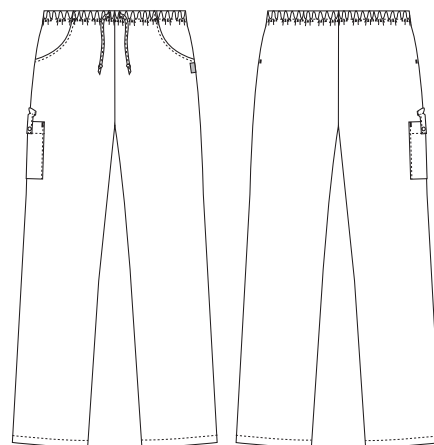


# Charisma Premium

## 1051251 UNISEX PANTS (Ordernumber: 1051251-0048)

Unisex pants in comfortable classic fit and elastic in the waist. The user will experience a remarkable comfort and the durability of the product is unique. This trousers are made of the new pleasant temperatureregulating fabric contains TENCEL™ Lyocell fibers.



### COLOURS:



0000-  
White



0011-  
Navy



0041-  
Anthracite



0048-  
Light Grey



### FACTS:

- Comfortable classic fit for both women and men
- Elastic in waist
- Tie cord ties at the front
- Comfortable front pockets
- Practical thigh pocket with closure and easy access



**QUALITY:** 50/50% polyester/ TENCEL™ Lyocell - 225 g/m<sup>2</sup>  
**STOCK SIZES:** XS - 4XL (5XL - 6XL special order)  
**CERTIFICERING & OUR ICONS:**



STANDARD  
100  
2076-306  
DTI  
www.oeko-tex.com



STeP

www.oeko-tex.com



MADE IN  
GREEN  
CB3VTM7MX  
DTI  
www.oeko-tex.com



**GREEN  
BUTTON**  
GOOD FOR PEOPLE.  
GOOD FOR NATURE.



TENCEL™ is a trademark of Lenzing AG .

### FINISHED MEASURES BEFORE WASHING:

		64	72	80	88	96	104	112	120	128	136	144	152	
	Stamping size	2XS	XS	S	M	L	XL	2XL	3XL	4XL	5XL	6XL	7XL	Tolerance
<b>A</b>	1/2 Waist width	27	31	35	39	43	47	51	55	59	63	67	71	+/- 2,0 cm
<b>B</b>	1/2 Hip width	42	46	50	53,5	57,5	61,5	65,5	69,5	73,5	77,5	81,5	85,5	+/- 1,5 cm
<b>E1*</b>	Rise (Help measure for hip)	19	20	21	22,5	24	25	26,5	28	29,5	31	32,5	34	
<b>C</b>	Side length	103	104	105	106,5	108	109	110,5	112	113,5	115	116,5	118	+/- 2,0 cm
<b>D</b>	Inseam length	79	79	79	79	79	79	79	79	79	79	79	79	+/- 1,5 cm

Please note: Final measures will depend on tolerance in garment making (See above) and measuring method (+/- 0.5 cm)  
Also note: Washing and drying conditions in industrial laundering can further more give a shrinkage up to 3-5% (Depending of material)  
All models meet the requirements industrial laundry. Washing instructions on our homepage [www.nybo.com](http://www.nybo.com)

### DOMESTIC LAUNDERING:



PURVEYOR TO H. M. THE QUEEN OF DENMARK

**NYBO**  
WORKWEAR SINCE 1962

