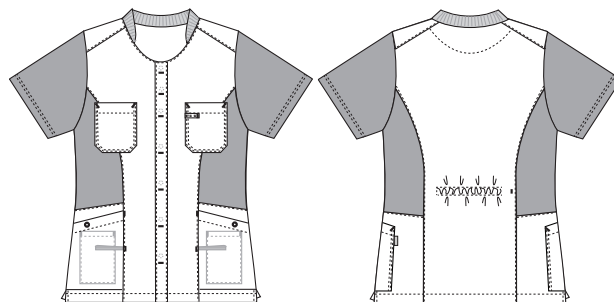


Sporty Mix

1361169 LADIES' SMOCK (Ordernumber: 1361169-0054)

Slightly waisted lady's tunic with hidden press button at front closure and soft ribbing at neck. Stretchability at front and in back gives nice flexibility. The tunic has hidden adjustment at the back to allow individual shaping at waist. Two large chest pockets with a hidden pen-strap and a visible strap for attaching ID-cards adds extra comfort and functionality. Roomy and closable hip pockets with key straps and large integrated pockets for mobile phones. The tunic has a good length covering lower back in all situations. Slits at sides adds to flexibility and movement.



COLOURS:



0011-Navy 0013-Light blue 0049-Grey 0054-Dark green 0064-Bordeaux

FACTS:

- Key straps inside the hip pockets
- Pencil strap inside the chest pocket
- Mobile and chest pocket which meet users' present needs
- All pockets are fitted with press buttons to secure pocket contents
- Stretchable back with inner waist adjustment in the ladies' models
- Adjustment straps in the unisex model for better freedom of movement
- Sporty lines and flatlock in contrast which gives a smart look
- Second quality in stretch for better comfort
- Tested and proven very high breathability



QUALITY: 50/50% polyester/BCI cotton - 140 g/m²

Piqué in 50/50% polyester/BCI cotton - 150 g/m²

STOCK SIZES: XS - 4XL (5XL - 6XL special order)

CERTIFICERING & OUR ICONS:



FINISHED MEASURES BEFORE WASHING:

	Stamping size	2XS	XS	S	M	L	XL	2XL	3XL	4XL	5XL	6XL	Tolerance
A	1/2 Chest width	44	48	52	56	60	66	72	78	84	90	96	+/- 1,5 cm
B	1/2 Bottom width	44	48	52	56	60	66	72	78	84	90	96	+/- 1,5 cm
C	Back length	70,5	71,5	72,5	73,5	74,5	75,5	76,5	77,5	78,5	79,5	80,5	+/- 1,5 cm
D	Sleeve length	24	24,5	25	25,5	26	26,5	27	28	29	30	31	+/- 1,0 cm

Please note: Final measures will depend on tolerance in garment making (See above) and measuring method (+/- 0.5 cm)

Also note: Washing and drying conditions in industrial laundering can further more give a shrinkage up to 3-5% (Depending of material)

All models meet the requirements industrial laundry. Washing instructions on our homepage www.nybo.com

DOMESTIC LAUNDERING:

