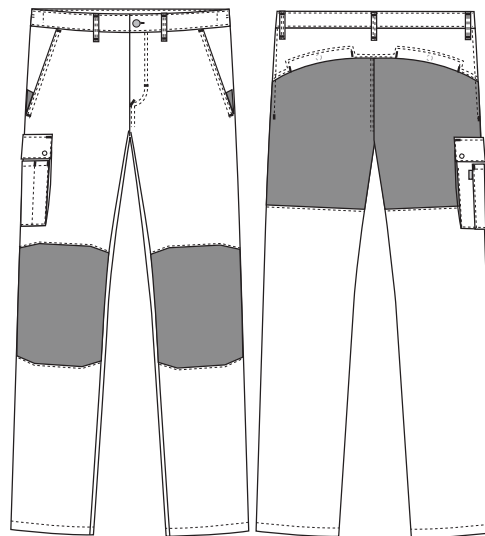


Super Cool

5050512 UNISEX TROUSERS (Ordernumber: 5050512-0011)

Versatile service trousers created in lightweight stretch quality for all-round use is a durable favorite amongst men and women. Two roomy front pockets and two hidden back pockets. Large and closable double pocket at right thigh to store all needed tools and aids throughout the day. 4-way stretch panels at back and knee areas secures perfect freedom of movement. Inside back of waistband is adjustable elastic, which in combination with outside belt loops adds optimal comfort in work situations. Tapered legs complete a minimalistic and classic look.

COLOURS:



FACTS:

- Waistband with belt loops, button, and zipper at front.
- Adjustable elastic in the back of waistband.
- Moderate waist height.
- 4-way stretch panels with cooling effect, at back and knees.
- Two roomy front pockets with stretch inset.
- Two closable back pockets.
- Double cargo pocket with closable pocket flap, at right thigh.
- Tapered legs for narrow silhouette.

QUALITY: 63/34/3% polyester/cotton/EOL stretch – 190 g/m²
STOCK SIZES: XS - 4XL (5XL - 6XL special order)
CERTIFICERING & OUR ICONS:



STANDARD
100
2076-306
DTI

www.oeko-tex.com



STeP

www.oeko-tex.com



MADE IN
GREEN
CB3VTM7MX
DTI

www.oeko-tex.com



stretch
Nybo Workwear AS



mobile pocket
Nybo Workwear AS



sustainable
Nybo Workwear AS

**GREEN
BUTTON**
GOOD FOR PEOPLE.
GOOD FOR NATURE.



FÆRDIGE MÅL FØR VASK:



amfori
Trade with purpose



	Stamping size	2XS	XS	S	M	L	XL	2XL	3XL	4XL	5XL	6XL	Tolerance
A	1/2 Waist width	33	37	41	45	49	53	57	61	65	69	73	+/- 1,5 cm
B	1/2 Hip width	42	46	50	54	58	62	66	70	74	78	82	+/- 1,5 cm
E1*	Rise (Help measure for hip)	11	11,3	11,7	12	12,3	12,7	13	13,4	13,7	14	14,4	
C	Side length	102,2	103,1	103,9	104,8	105,7	106,5	107,4	108,3	109,2	110,1	111	+/- 1,5 cm
D	Inseam length	84	84	84	84	84	84	84	84	84	84	84	+/- 1,5 cm

Please note: Final measures will depend on tolerance in garment making (See above) and measuring method (+/- 0.5 cm)

Also note: Washing and drying conditions in industrial laundering can further more give a shrinkage up to 3-5% (Depending of material)
 All models meet the requirements industrial laundry. Washing instructions on our homepage www.nybo.com

DOMESTIC LAUNDERING:



PURVEYOR TO H. M. THE QUEEN OF DENMARK
NYBO
 WORKWEAR SINCE 1962

