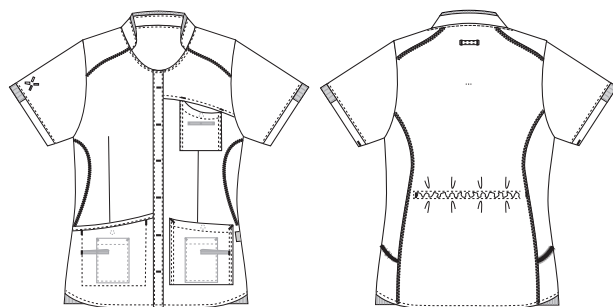


# Sporty

## 1360779 CASUAL AND TRENDY TUNIC/SHIRT (Ordernumber: 1360779-0010)

Slightly waisted ladies' shirt with elastic adjustment at the back to allow extra shaping at the waist. The shirt is designed with a breast pocket and both hip pockets have integrated pockets for mobile phones and key straps. All pockets are fitted with press buttons to secure pocket contents. The shirt has a decent length that covers the lower back well in all situations. The shirt is designed with a rounded bottom edge with ribbing in the sides for extra flexibility.



### COLOURS:



0010-Blue



0011-Navy



0013-Light blue



0040-Grey



0050-Green

0053-  
Light Green0054-  
Dark Green

0064-Bordeaux



### FACTS:

- Key straps inside the hip pockets
- Pencil strap inside the chest pocket
- Mobile and chest pocket which meet users' present needs
- All pockets are fitted with press buttons to secure pocket contents
- Stretchable back with inner waist adjustment in the ladies' models
- Sporty lines and flatlock in contrast which gives a smart look
- Second quality in stretch for better comfort
- Tested and proven very high breathability



**QUALITY:** 50/50% polyester/BCI cotton - 140 g/m<sup>2</sup>  
**STOCK SIZES:** XS - 4XL (5XL - 6XL special order)  
**CERTIFICERING & OUR ICONS:**



STANDARD  
100  
2076-306  
DTI

www.oeko-tex.com



breathable  
Nybo Workwear A/S



mobile pocket  
Nybo Workwear A/S



key strap  
Nybo Workwear A/S



adjustable back  
Nybo Workwear A/S



diagonal stretch  
Nybo Workwear A/S



### FINISHED MEASURES BEFORE WASHING:

	Stamping size	2XS/28-30	XS/32-34	S/36-38	M/40-42	L/44-46	XL/48-50	2XL/52-54	3XL/56-58	4XL/60-62	5XL/64-66	Tolerance
<b>A</b>	1/2 Chest width	44	48	52	56	60	66	72	78	84	90	+/- 1,5 cm
<b>B</b>	1/2 Bottom width	48,5	52	55,5	58,5	61,5	66,5	71,5	76,5	81,5	86,5	+/- 1,5 cm
<b>C</b>	Back length	71,8	72,8	73,8	74,8	75,8	76,8	77,8	78,8	79,8	80,8	+/- 1,5 cm
<b>D</b>	Sleeve length	21,2	21,8	22,4	23	23,6	24,2	24,8	25,4	26	26,6	+/- 1,0 cm

Please note: Final measures will depend on tolerance in garment making (See above) and measuring method (+/- 0.5 cm)  
Also note: Washing and drying conditions in industrial laundering can further more give a shrinkage up to 3-5% (Depending of material)  
All models meet the requirements industrial laundry. Washing instructions on our homepage [www.nybo.com](http://www.nybo.com)

### DOMESTIC LAUNDERING:



PURVEYOR TO H. M. THE QUEEN OF DENMARK

# NYBO

WORKWEAR SINCE 1962

