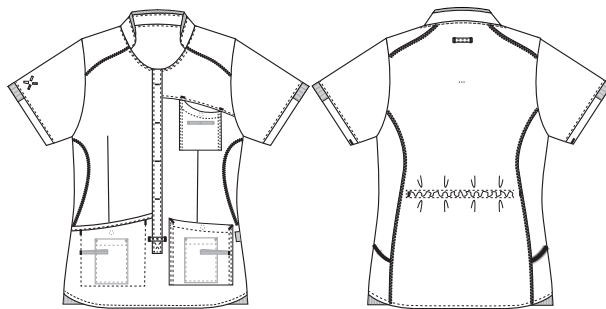


Sporty

1470279 CASUAL AND TRENDY LADIES' SMOCK (Ordernumber: 1470279-0054)

Slightly waisted ladies' smock with a large opening in the front, which enables the user to drag it over the legs and to step out of it. This ensures that there is no contact between the contaminated clothes and the user's facial area. The smock has elastic adjustment at the back to allow extra shaping at the waist. The shirt is designed with a breast pocket and both hip pockets have integrated pockets for mobile phones and key straps. All pockets are fitted with press buttons to secure pocket contents. The shirt has a decent length that covers the lower back well in all situations. The shirt is designed with a rounded bottom edge with ribbing in the sides for extra flexibility.



COLOURS:



0010-Blue



0011-Navy



0040-Grey



0050-Green



0054-Dark Green



0064-Bordeaux

FACTS:

- Key straps inside the hip pockets
- Pencil strap inside the chest pocket
- Mobile and chest pocket which meet users' present needs
- All pockets are fitted with press buttons to secure pocket contents
- Stretchable back with inner waist adjustment in the ladies' models
- Sporty lines and flatlock in contrast which gives a smart look
- Second quality in stretch for better comfort
- Tested and proven very high breathability

QUALITY: 50/50% polyester/BCI cotton - 140 g/m²
STOCK SIZES: XS - 4XL (5XL - 6XL special order)
CERTIFICERING & OUR ICONS:



STANDARD
100
2076-306
DTI

www.oeko-tex.com



64 8080



Nybo Workwear A/S



Nybo Workwear A/S



Nybo Workwear A/S



Nybo Workwear A/S



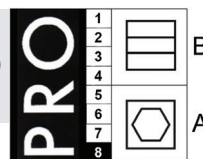
Nybo Workwear A/S



FINISHED MEASURES BEFORE WASHING:

| | | 34 | 38 | 42 | 46 | 50 | 54 | 58 | 62 | |
|---|------------------|----------|---------|---------|---------|----------|-----------|-----------|-----------|------------|
| | Stamping size | XS/32-34 | S/36-38 | M/40-42 | L/44-46 | XL/48-50 | 2XL/52-54 | 3XL/56-58 | 4XL/60-62 | Tolerance |
| A | 1/2 Chest width | 48 | 52 | 56 | 60 | 66 | 72 | 78 | 84 | +/- 1,5 cm |
| B | 1/2 Bottom width | 52 | 55,5 | 58,5 | 61,5 | 66,5 | 71,5 | 76,5 | 81,5 | +/- 1,5 cm |
| C | Back length | 71,8 | 72,8 | 73,8 | 74,8 | 75,8 | 76,8 | 77,8 | 78,8 | +/- 1,5 cm |
| D | Sleeve length | 21,8 | 22,4 | 23 | 23,6 | 24,2 | 24,8 | 25,4 | 26 | +/- 1,0 cm |

Please note: Final measures will depend on tolerance in garment making (See above) and measuring method (+/- 0.5 cm)
 Also note: Washing and drying conditions in industrial laundering can further more give a shrinkage up to 3-5% (Depending of material)
 All models meet the requirements industrial laundry. Washing instructions on our homepage www.nybo.com



DOMESTIC LAUNDERING:



PURVEYOR TO H. M. THE QUEEN OF DENMARK

NYBO

WORKWEAR SINCE 1962