

Harmony

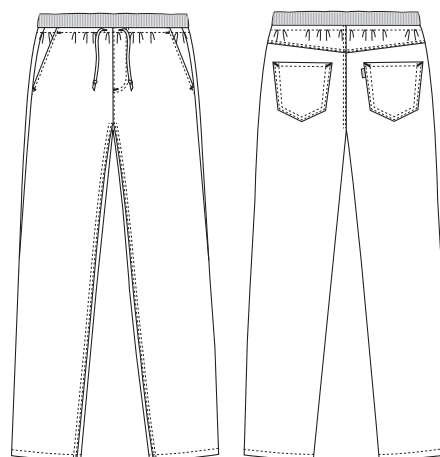
505042100 PULL-ON JEANS (Ordernumber: 505042100-02)

These stretch pull-on jeans with wide rib, elastic and drawstring inside waist offer an optimal fit and room for movement for women and men who prefer casual fit with slimming hip and thigh. The special designed rib-waist and low-cut waist height gives a clean and modern appearance. Narrow leg opening adds to the modern and casual look.

COLOURS:



02-White



FACTS:

- Pull-on jeans with 5-pocket details.
- Wide rib-waist with drawstring.
- Moderate/low waist height.
- Slimming hip and thigh width suitable for unisex fit.
- Front pockets with easy access.
- Two jeans back pockets.
- Narrow leg opening.
- Light weight quality without being transparent.

QUALITY: 64/34/2% polyester/cotton/EOL stretch – 245 g/m²

STOCK SIZES: XS - 4XL

CERTIFICERING & OUR ICONS:



FINISHED MEASURES BEFORE WASHING:

	Stamping size	XS	S	M	L	XL	2XL	3XL	4XL	Tolerance
A	1/2 Waist width	33,3	35,4	37,5	40,6	43,8	46,9	50,1	53,2	+/- 2,0 cm
B	1/2 Hip width	47,5	50,5	53,5	57,5	61,5	65,5	69,5	73,5	+/- 1,5 cm
E1*	Rise (Help measure for hip)	12,3	12,9	13,5	14,3	15,1	15,9	16,7	17,5	
C	Side length	102,5	103,5	104,5	106	107,5	109	110,5	112	+/- 2,0 cm
D	Inseam length	82	82	82	82	82	82	82	82	+/- 1,5 cm

Please note: Final measures will depend on tolerance in garment making (See above) and measuring method (+/- 0.5 cm)
Also note: Washing and drying conditions in industrial laundering can further more give a shrinkage up to 3-5% (Depending of material)
All models meet the requirements industrial laundry. Washing instructions on our homepage www.nybo.com

DOMESTIC LAUNDERING:



PURVEYOR TO H. M. THE QUEEN OF DENMARK

NYBO
WORKWEAR SINCE 1962