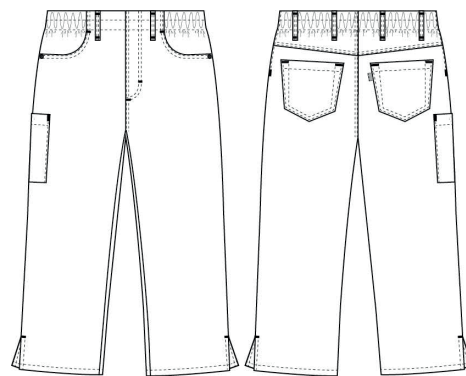


Super Cool

1051222 CAPRI PULL-ON - 190 G/M²
 (Ordernumber: 1051222-0011)

Our capri pull-on light weight jeans in classic 5-pocket style with special developed 4 cm elastic inside waist offers an optimal fit and room for movement for women and men who prefer casual fit with slimming hip and thigh. This style can also be worn in early stage of pregnancy. The special designed flat-front waist gives a stylish and modern appearance. Belt loops placed close to the deep and roomy front pockets are highly functional for e.g. key chains and ID cards. The discreet thigh pocket, with extra volume and press button closure, is well-placed so there is easy access during a busy day. The shortened capri style has slits at leg openings for extra comfort and movement which also gives a stylish look and makes these jeans a perfect choice for warm seasons and for daily wear both indoors and light wear outdoors.



COLOURS:



0011-Navy

FACTS:

- Pull-on style with 5-pocket details.
- Wide elastic band at waist with flat-front look.
- Moderate/high waist height.
- Slimming hip and thigh width suitable for unisex fit.
- Deep front pockets with extra room and easy access.
- Two jeans back pockets.
- One thigh pocket with press button closure. Pocket size fits modern mobile phones and devises.
- Slit at leg opening for increased movement and comfort.



QUALITY: 63/34/3% polyester/cotton/EOL stretch – 190 g/m²
STOCK SIZES: XS - 4XL
CERTIFICERING & OUR ICONS:

**GREEN
 BUTTON**
 GOOD FOR PEOPLE.
 GOOD FOR NATURE.

STANDARD 100 2076-306 DTI www.oeko-tex.com

 MADE IN GREEN CB3VTM7MXY DTI www.oeko-tex.com
 key strap Nybo Workwear A/S
 stretch Nybo Workwear A/S
 mobile pocket Nybo Workwear A/S
 sustainable Nybo Workwear A/S

FINISHED MEASURES BEFORE WASHING:

amfori Trade with purpose
 EU Ecolabel www.ecolabel.eu

		64	72	80	88	96	104	112	120	128	136	144	
	Stamping size	2XS	XS	S	M	L	XL	2XL	3XL	4XL	5XL	6XL	Tolerance
A	1/2 Waist width	26,5	29,5	33	36	40	43,5	47,5	50	55	58,5	62	+/- 2,0 cm
B	1/2 Hip width	45,2	48,2	51,2	54,5	56,5	62,5	66,7	70,5	74,5	78,5	82,5	+/- 1,5 cm
E1*	Rise (Help measure for hip)	15	15	15	15	15	17	17	17	17	17	17	
C	Side length	73,5	74,5	75,5	77	78	79,5	81	82,5	84,5	86	87,5	+/- 2,0 cm
D	Inseam length	55	55	55	55	55	55	55	55	55	55	55	+/- 1,5 cm

Please note: Final measures will depend on tolerance in garment making (See above) and measuring method (+/- 0.5 cm)
 Also note: Washing and drying conditions in industrial laundering can further more give a shrinkage up to 3-5% (Depending of material)
 All models meet the requirements industrial laundry. Washing instructions on our homepage www.nybo.com

DOMESTIC LAUNDERING:



PURVEYOR TO H. M. THE QUEEN OF DENMARK
NYBO
 WORKWEAR SINCE 1962

