

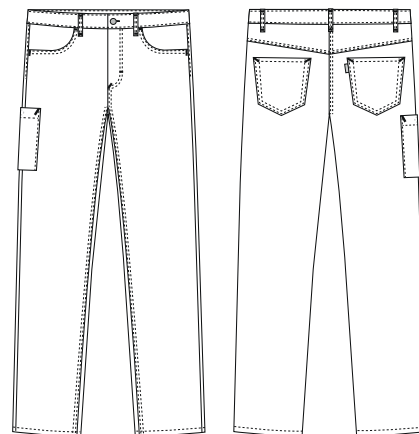
# Super Cool

## 2051822 MEN'S JEANS - 245 G/M<sup>2</sup>

(Ordernumber: 2051742-0000)

Also available in length: short -10 cm, long +10 cm.

These adjustable jeans have a great, youthful fit. Suitable for men of all ages and for women who prefer a unisex fit. There is an adjustable elastic inside the back of the waistband for optimal comfort in work situations. A discreet thigh pocket with extra space and a snap-button closure. The fabric is 245 g/m<sup>2</sup> to make it less transparent, and it has stretch to enhance comfort. These jeans are the perfect choice year-round and for daily use, both indoors and for light outdoor wear.



### COLOURS:



0000-White



### FACTS:

- Classic 5-pocket jeans.
- Waistband with button and front zipper.
- Adjustable elastic inside the back of the waistband.
- Cool jeans fit, suitable for unisex use.
- Deep front pockets with extra space and easy access.
- Two back pockets in jeans style.
- Thigh pocket with snap-button closure, suitable for items like smartphones.



**QUALITY:** 64/34/2% polyester/cotton/EOL stretch – 245 g/m<sup>2</sup>

**STOCK SIZES:** XS - 4XL

**CERTIFICERING & OUR ICONS:**



**STANDARD 100**  
2076-306  
DTI

www.oeko-tex.com



STeP

www.oeko-tex.com



MADE IN GREEN

CB3VTM7MXY  
DTI

www.oeko-tex.com



key strap

Nybo Workwear A/S



mobile pocket

Nybo Workwear A/S



adjustable waist

Nybo Workwear A/S



flexible ribbing

Nybo Workwear A/S



sustainable

Nybo Workwear A/S



### FINISHED MEASURES BEFORE WASHING:

Stamp size	2XS	XS	S	M	L	XL	2XL	3XL	4XL	5XL	6XL	Tolerance
<b>A</b> ½ Waist width	33.0	37.0	41.0	<b>45.0</b>	50.0	55.0	60.0	65.0	70.0	75.0	80.0	+/- 2,0 cm
<b>B</b> ½ Hip width (See E1 dist.)	42.0	46.0	50.0	<b>54.0</b>	58.0	62.0	66.0	70.0	74.0	78.0	82.0	+/- 1,5 cm
<b>C</b> Side length (Std.)	100.2	101.1	101.9	<b>102.8</b>	103.8	104.8	105.8	106.8	107.8	108.8	109.8	+/- 2,0 cm
<b>D</b> Inseam length (Std.)	80.5	80.5	80.5	<b>80.5</b>	80.5	80.5	80.5	80.5	80.5	80.5	80.5	+/- 1,5 cm
<b>E1</b> Hip dist. below waist	11.8	12.2	12.6	<b>13.0</b>	13.4	13.8	14.2	14.6	15.0	15.4	15.8	

Please note: Final measures will depend on tolerance in garment making (See above) and measuring method (+/- 0.5 cm)

Also note: Washing and drying conditions in industrial laundering can further more give a shrinkage up to 3-5% (Depending of material)

All models meet the requirements industrial laundry. Washing instructions on our homepage www.nybo.com

### DOMESTIC LAUNDERING:



PURVEYOR TO H. M. THE QUEEN OF DENMARK

# NYBO

WORKWEAR SINCE 1962

