

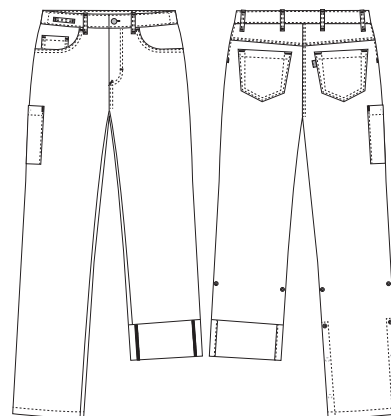
# Super Cool

## 1051182 LADIES' CLASSIC FIT JEANS - 245 G/M<sup>2</sup>

(Ordernumber: 1051182-0011)

Also available in length +10 cm.

These flexible jeans in classic 5-pocket style is a perfect match for women who prefer trousers with a well-proportioned and feminine shape. Waistline is narrower than hip area and inside back of waistband is adjustable elastic for optimal comfort in work situations. A horizontal belt loop placed close to the deep and roomy front pockets is highly functional for e.g. key chains and ID cards. The discreet thigh pocket, with extra volume and press button closure, is well-placed so there is easy access during a busy day. Adjustable leg length, with functional roll-up detailing, makes these jeans a perfect choice for different seasons and for daily wear both indoors and outdoors.



### COLOURS:



0011-Navy

### FACTS:

- Classic 5-pocket style.
- Waistband with button and zipper at front.
- Adjustable elastic in the back of waistband.
- Horizontal belt loop accommodating key chains etc.
- Moderate/high waist height.
- Pleasantly roomy hip and thigh width.
- Deep front pockets with extra room and easy access.
- Two jeans back pockets.
- One thigh pocket with press button closure. Pocket size fits modern mobile phones and devises.
- Adjustable inseam length with practical press button detail, to accommodate all seasons.

**QUALITY:** 63/34/3% polyester/cotton/EOL stretch – 245 g/m<sup>2</sup>

**STOCK SIZES:** XS - 4XL

**CERTIFICERING & OUR ICONS:**

STANDARD 100  
2076-306  
DTI  
www.oeko-tex.com

STeP  
www.oeko-tex.com

MADE IN GREEN  
CB3VTM7MXY  
DTI  
www.oeko-tex.com

key strap  
Nybo Workwear A/S

adjustable length  
Nybo Workwear A/S

stretch  
Nybo Workwear A/S

mobile pocket  
Nybo Workwear A/S

adjustable waist  
Nybo Workwear A/S



### FINISHED MEASURES BEFORE WASHING:

|            | Stamping size               | 2XS   | XS   | S     | M     | L     | XL    | 2XL   | 3XL   | 4XL   | 5XL   | 6XL   | Tolerance  |
|------------|-----------------------------|-------|------|-------|-------|-------|-------|-------|-------|-------|-------|-------|------------|
| <b>A</b>   | 1/2 Waist width             | 32    | 36   | 40    | 44    | 48    | 52    | 56    | 60    | 64    | 68    | 72    | +/- 1,5 cm |
| <b>B</b>   | 1/2 Hip width               | 46    | 49   | 52    | 55    | 59    | 63    | 67    | 71    | 75    | 79    | 83    | +/- 1,5 cm |
| <b>E1*</b> | Rise (Help measure for hip) | 15,5  | 15,5 | 15,5  | 15,5  | 15,5  | 15,5  | 15,5  | 15,5  | 15,5  | 15,5  | 15,5  |            |
| <b>C</b>   | Side length                 | 102,5 | 103  | 104,5 | 105,5 | 106,5 | 107,5 | 108,5 | 109,5 | 110,5 | 111,5 | 112,5 | +/- 2,0 cm |
| <b>C</b>   | Side length -10             | 92,5  | 93   | 94,5  | 95,5  | 96,5  | 97,5  | 98,5  | 99,5  | 100,5 | 101,5 | 102,5 | +/- 2,0 cm |
| <b>C</b>   | Side length +10             | 112,5 | 113  | 114,5 | 115,5 | 116,5 | 117,5 | 118,5 | 119,5 | 120,5 | 121,5 | 122,5 | +/- 2,0 cm |
| <b>D</b>   | Inseam length               | 82    | 82   | 82    | 82    | 82    | 82    | 82    | 82    | 82    | 82    | 82    | +/- 1,5 cm |
| <b>D</b>   | Inseam length -10           | 72    | 72   | 72    | 72    | 72    | 72    | 72    | 72    | 72    | 72    | 72    | +/- 1,5 cm |
| <b>D</b>   | Inseam length +10           | 92    | 92   | 92    | 92    | 92    | 92    | 92    | 92    | 92    | 92    | 92    | +/- 1,5 cm |

Please note: Final measures will depend on tolerance in garment making (See above) and measuring method (+/- 0.5 cm)  
 Also note: Washing and drying conditions in industrial laundering can further more give a shrinkage up to 3-5% (Depending of material)  
 All models meet the requirements industrial laundry. Washing instructions on our homepage [www.nybo.com](http://www.nybo.com)

### DOMESTIC LAUNDERING:

