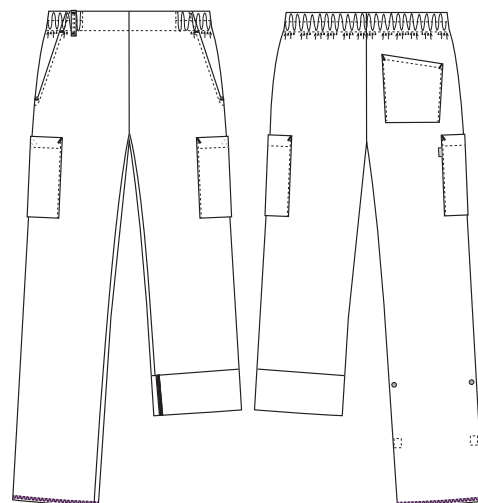


# Sporty T800

## 1051389 PULL-ON STRETCH PANTS, UNHEMMED (Ordernumber: 105189-0011)

These flexible and light weight multi stretch pull-on pants with special developed 4 cm elastic inside waist offers an optimal fit and room for movement for women and men who prefer casual fit and lots of movement. This style can also be worn in the early stage of pregnancy. The specially designed flat-front waist gives a stylish and modern appearance. One belt loop placed close to the deep and roomy right side front pocket is highly functional for e.g., key chains and ID cards. The two large, yet discreet thigh pockets, with extra volume and press button closure, are well-placed so there is easy access during a busy day. Adjustable leg length, with functional roll-up detailing, makes these pants a perfect choice for different seasons and for daily wear both indoors and light wear outdoors.



### COLOURS:



0011-Navy

### FACTS:

- Elegant and minimalistic appearance.
- Pull-on style for extra comfort and fit
- Wide elastic band at waist with flat-front look
- Moderate waist height
- Deep front pockets with extra room and easy access
- One back pocket
- Two large thigh pockets with press button closure. Pocket size fits modern mobile phones and devices.
- Adjustable inseam length with easy-access press button detail, to accommodate all seasons
- 4-way stretch quality with integrated cooling effect
- Same style in 92 cm inseam unhemmed: 1051369



**QUALITY:** 100% polyester T800 stretch – 120 g/m<sup>2</sup>

**STOCK SIZES:** XS - 4XL

**CERTIFICERING & OUR ICONS:**



**STANDARD  
100**

2076-306  
DTI

www.oeko-tex.com



### FINISHED MEASURES BEFORE WASHING:

	Stamping size	2XS	XS	S	M	L	XL	2XL	3XL	4XL	5XL	6XL	Tolerance
<b>A</b>	1/2 Waist width	26,5	29,5	33	36	40	43,5	47,5	50	55	58,5	62	+/- 1,5 cm
<b>B</b>	1/2 Hip width	45,2	48,2	51,2	54,5	56,5	62,5	66,7	70,5	74,5	78,5	82,5	+/- 1,5 cm
<b>E1*</b>	Rise (Help measure for hip)	15	15	15	15	15	17	17	17	17	17	17	
<b>C</b>	Side length unhemmed	110,5	111,5	112,5	114	115	116,5	118	119,5	121,5	123	124,5	+/- 1,5 cm
<b>D</b>	Inseam length unhemmed	92	92	92	92	92	92	92	92	92	92	92	+/- 1,5 cm

*Please note: Final measures will depend on tolerance in garment making (See above) and measuring method (+/- 0.5 cm)  
Also note: Washing and drying conditions in industrial laundering can further more give a shrinkage up to 3-5% (Depending of material)  
All models meet the requirements industrial laundry. Washing instructions on our homepage [www.nybo.com](http://www.nybo.com)*

### DOMESTIC LAUNDERING:



PURVEYOR TO H. M. THE QUEEN OF DENMARK

**NYBO**  
WORKWEAR SINCE 1962