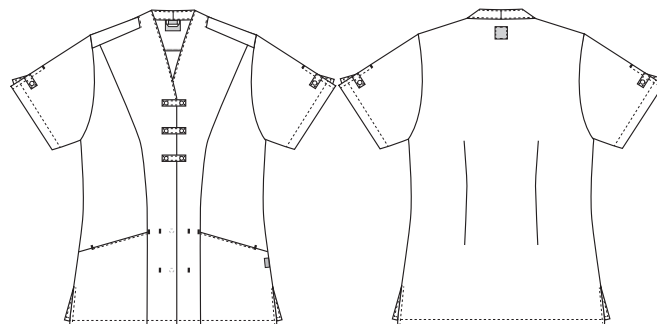


# Wellness

## 1360601 LADIES' TUNIC W. STRETCH (Ordernumber: 1360601-0072)

Ladies' tunic with simple, visually slimming vertical cut. This tunic offers good freedom of movement, and the small sleeve vents provide a subtle detail and good flexibility for movement/massage. There are good, deep hip pockets for oils, paper, etc. Practical key loops are attached to the bottom of the pockets. The tunic fastens at the front with three visible snap fasteners that fasten on the left side of the three cross tabs, in addition to two concealed snap fasteners under the tabs.



### COLOURS:



72-Black

### FACTS:

- Asian style inspired
- Many smart details
- Comfortable fabric
- Big, deep pockets
- Internal neck strap
- Slits for better comfort
- practical key strap
- Adjustment on sleeve for good flexibility

**QUALITY:** 65/32/3% polyester/cotton/EOL-stretch - 215 g/m<sup>2</sup>

**STOCK SIZES:** XS - 4XL (5XL - 6XL special order)

**CERTIFICERING & OUR ICONS:**



### FINISHED MEASURES BEFORE WASHING:

	Stamping size	XS/32-34	S/36-38	M/40-42	L/44-46	XL/48-50	2XL/52-54	3XL/56-58	4XL/60-62	5XL/64-66	Tolerance
A	1/2 Chest width	48	52	56	60	66	72	78	84	90	+/- 1,5 cm
B	1/2 Bottom width	52	55,5	58,5	61,5	66,5	71,5	76,5	81,5	86,5	+/- 1,5 cm
C	Back length	73	74	75	76	77	78	79	80	81	+/- 1,5 cm
D	Sleeve length	21	22	23	24	25	25,5	26,5	27,5	28,5	+/- 1,0 cm

Please note: Final measures will depend on tolerance in garment making (See above) and measuring method (+/- 0.5 cm)

Also note: Washing and drying conditions in industrial laundering can further more give a shrinkage up to 3-5% (Depending of material)

All models meet the requirements industrial laundry. Washing instructions on our homepage [www.nybo.com](http://www.nybo.com)

### DOMESTIC LAUNDERING:



PURVEYOR TO H. M. THE QUEEN OF DENMARK

**NYBO**  
WORKWEAR SINCE 1962

