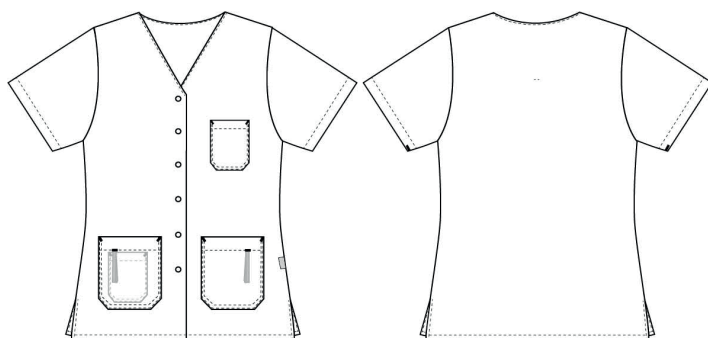


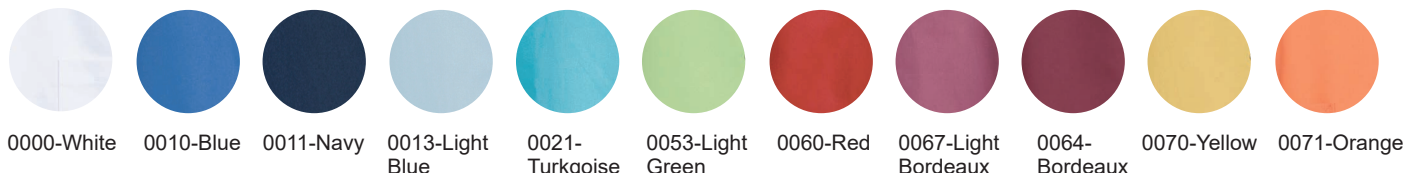
# Charisma Premium

## 1360861 LADIES' TUNIC (Ordernumber: 1360861-0070)

Beautiful waisted tunic with a good length that covers the behind nicely. The sleeves cover the upper arms with a nice and modern appearance. The model has long slits in the sides for optimal freedom of movement. The decent sized V-neck makes the neck and face appear a little slimmer. The model has one chest pocket and two hip pockets with key straps. As an extra nice feature a handy pocket for the mobile phone is placed inside the right hip pocket. This tunic is made of the new pleasant temperature regulating fabric contains TENCEL™ Lyocell fibers.



### COLOURS:



0000-White 0010-Blue 0011-Navy 0013-Light Blue 0021-Turquoise 0053-Light Green 0060-Red 0067-Light Bordeaux 0064-Bordeaux 0070-Yellow 0071-Orange



### FACTS:

- Key straps inside the hip pockets
- Pencil strap inside the chest pocket
- Mobile and chest pocket which meet users' present needs
- Slits for better comfort
- FlexFix press buttons
- Temperature regulating fabric
- V-neck makes the neck and face appear a little slimmer
- Comes in a wide spectrum of colours, to match different trousers



**QUALITY:** 50/50% polyester/TENCEL™ Lyocell - 200 g/m<sup>2</sup>

**STOCK SIZES:** XS - 4XL (5XL - 6XL special order)

**CERTIFICERING & OUR ICONS:**



**GREEN BUTTON**  
GOOD FOR PEOPLE.  
GOOD FOR NATURE.

TENCEL™ is a trademark of Lenzing AG.

### FINISHED MEASURES BEFORE WASHING:

		30	34	38	42	46	50	54	58	62	66	70	
	Stamping size	2XS	XS	S	M	L	XL	2XL	3XL	4XL	5XL	6XL	Tolerance
<b>A</b>	1/2 Chest width	44	48	52	56	60	66	72	78	84	90	96	+/- 1,5 cm
<b>B</b>	1/2 Bottom width	45	49	53	57	61	67	73	79	85	91	97	+/- 1,5 cm
<b>C</b>	Back length	69	70	71	72	73	74	75	76	77	78	79	+/- 1,5 cm
<b>D</b>	Sleeve length	22,5	23,5	24	25	25,5	25,5	27	27,5	28,5	28,5	28,5	+/- 1,0 cm

Please note: Final measures will depend on tolerance in garment making (See above) and measuring method (+/- 0.5 cm)  
Also note: Washing and drying conditions in industrial laundering can further more give a shrinkage up to 3-5% (Depending of material)  
All models meet the requirements industrial laundry. Washing instructions on our homepage [www.nybo.com](http://www.nybo.com)

### DOMESTIC LAUNDERING:

