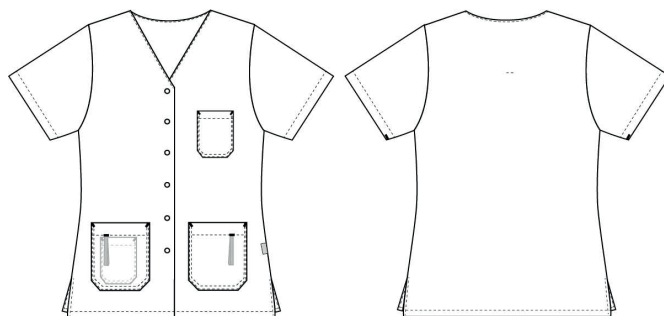


# Charisma

## 1360741 LADIES' TUNIC (Ordernumber: 1360741-0064)

Beautiful waisted tunic with a good length that covers the behind nicely. The sleeves cover the upper arms with a nice and trendy appearance. The model has long slits in the sides for optimal freedom of movement. The decent sized V-neck makes the neck and face appear a little slimmer. The model has one chest pocket and two hip pockets with key straps. As an extra nice feature a handy pocket for the mobile phone is placed inside the right hip pocket.



### COLOURS:



0014-Sailor Blue    0021-Turquoise    0011-Navy    0053-Light Green    0063-Pink    0064-Bordeaux

### FACTS:

- Key straps inside the hip pockets
- Pencil strap inside the chest pocket
- Mobile and chest pocket which meet users' present needs
- Slits for better comfort
- FlexFix press buttons
- V-neck makes the neck and face appear a little slimmer
- Comes in a wide spectrum of colours, to match different trousers



**QUALITY:** 50/50% polyester/cotton - 180 g/m<sup>2</sup>  
**STOCK SIZES:** XS - 4XL (5XL - 6XL special order)  
**CERTIFICERING & OUR ICONS:**



### FINISHED MEASURES BEFORE WASHING:

		30	34	38	42	46	50	54	58	62	66	70	
	Stamping size	2XS	XS	S	M	L	XL	2XL	3XL	4XL	5XL	6XL	Tolerance
<b>A</b>	1/2 Chest width	44	48	52	56	60	66	72	78	84	90	96	+/- 1,5 cm
<b>B</b>	1/2 Bottom width	45,2	49,2	53,2	57,2	61,2	67,2	73,2	79,2	85,2	91	97	+/- 1,5 cm
<b>C</b>	Back length	69	70	71	72	73	74	75	76	77	78	79	+/- 1,5 cm
<b>D</b>	Sleeve length	22,5	23,4	24,2	24,9	25,6	25,7	27	27,4	28,7	28,7	28,7	+/- 1,0 cm

Please note: Final measures will depend on tolerance in garment making (See above) and measuring method (+/- 0.5 cm)  
 Also note: Washing and drying conditions in industrial laundering can further more give a shrinkage up to 3-5% (Depending of material)  
 All models meet the requirements industrial laundry. Washing instructions on our homepage [www.nybo.com](http://www.nybo.com)

### DOMESTIC LAUNDERING:

