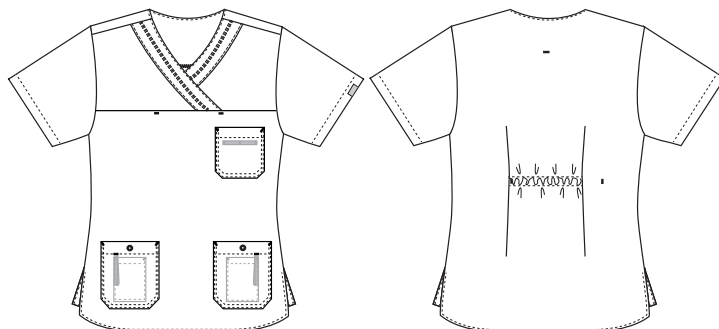


Nature

1470379 FEMININE LADIES' SMOCK IN SUSTAINABLE FABRIC (Ordernumber: 1470379-0011)

Ladies' smock with a feminine cut and fine details, good fitting and nicely shaped V-neck, which gives a slim look to neck and face. The model has hip pockets with an inner mobile pocket and with key strap, and pen strap in the breast pocket. The back is flexible with built in adjustment.



COLOURS:



0011-
Navy



0013-
Light Blue



0045-
DarkGrey



0050-
Light Green



0064-
Bordeaux

FACTS:

- Key straps inside the hip pockets
- Pencil strap inside the chest pocket
- Mobile and chest pocket which meet users' present needs
- All pockets are fitted with press buttons to secure pocket contents
- Stretchable back with inner waist adjustment in the ladies' models
- Adjustment straps in the unisex model
- Tested and proven very high breathability



QUALITY: 50/50% recycled polyester/organic cotton - 140 g/m²
STOCK SIZES: XS - 4XL (5XL - 6XL special order)
CERTIFICERING & OUR ICONS:



EU Ecolabel : DK/016/077



sustainable
Nybo Workwear A/S



organic cotton
Nybo Workwear A/S



recycled polyester
Nybo Workwear A/S



breathable
Nybo Workwear A/S



key strap
Nybo Workwear A/S



adjustable back
Nybo Workwear A/S



diagonal stretch
Nybo Workwear A/S



mobile pocket
Nybo Workwear A/S

FINISHED MEASURES BEFORE WASHING:

		30	34	38	42	46	50	54	58	62	66	70	
	Stamping size	2XS	XS	S	M	L	XL	2XL	3XL	4XL	5XL	6XL	Tolerance
A	1/2 Chest width	45,5	49,5	53,5	57,5	61,5	67,5	73,5	79,5	85,5	91,5	97,5	+/- 1,5 cm
B	1/2 Bottom width	48	51,5	55	58,5	62	67,5	73	78,5	84	89,5	95	+/- 1,5 cm
C	Back length	72	73	74	75	76	77	78	79	80	81	82	+/- 2,0 cm
D	Sleeve length	23,5	24	24,5	25	25,5	26	27	27,5	28,5	29	30	+/- 1,0 cm

Please note: Final measures will depend on tolerance in garment making (See above) and measuring method (+/- 0.5 cm)
 Also note: Washing and drying conditions in industrial laundering can further more give a shrinkage up to 3-5% (Depending of material)
 All models meet the requirements industrial laundry. Washing instructions on our homepage www.nybo.com

DOMESTIC LAUNDERING:

