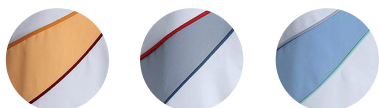


Sunshine

1160331 LADIES' TUNIC W. COTTON ON INSIDE (Ordernumber: 1160331-0108)

This tunic has two hip pockets. The left one has a practical key loop, while the right one has a useful double pocket. The tunic has a left breast pocket for a ballpoint pen, name badge, etc. It has an external neck loop. It has side slits for increased freedom of movement and fastens at the front with snap fasteners. This style has flex fix fasteners specially developed for industrial washing.

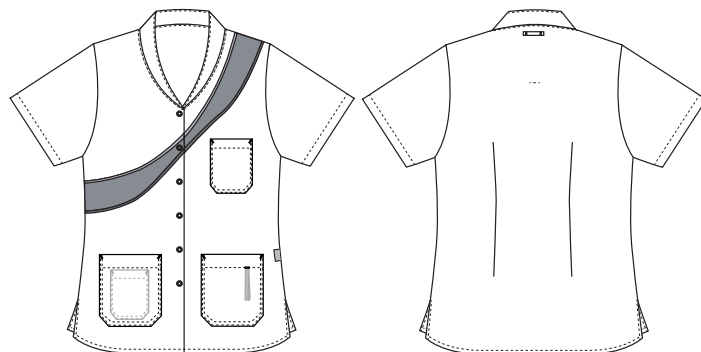
COLOURS:



0114-White/
Yellow/
Orange/
Bordeaux

0108-White/
Grey/
Red/
Pale Grey

0123-White/
Light Blue/
Light Green/
Pale Grey



FACTS:

- Good spacious pockets
- Exterior neck strap
- Mobile pocket and key strap in hip pocket
- Slits for better comfort
- Nice and practical colour combination



QUALITY: 50/50% polyester/cotton - 215 g/m²
STOCK SIZES: XS - 4XL (5XL - 6XL special order)
CERTIFICERING & OUR ICONS:



FINISHED MEASURES BEFORE WASHING:

		30	34	38	42	46	50	54	58	62	66	
	Stamping size	XXS	XS	S	M	L	XL	2XL	3XL	4XL	5XL	Tolerance
A	1/2 Chest width	44	48	52	56	60	66	72	78	84	90	+/- 1,5 cm
B	1/2 Bottom width	46	50	54	58	62	68	74	80	86	92	+/- 1,5 cm
C	Back length	72	73	74	75	76	77	78	79	80	81	+/- 1,5 cm
D	Sleeve length	24	24,5	25,5	26	26,5	27	28	28	29,5	29,5	+/- 1,0 cm

Please note: Final measures will depend on tolerance in garment making (See above) and measuring method (+/- 0.5 cm)
Also note: Washing and drying conditions in industrial laundering can further more give a shrinkage up to 3-5% (Depending of material)
All models meet the requirements industrial laundry. Washing instructions on our homepage www.nybo.com

DOMESTIC LAUNDERING:



PURVEYOR TO H. M. THE QUEEN OF DENMARK

NYBO
WORKWEAR SINCE 1962

