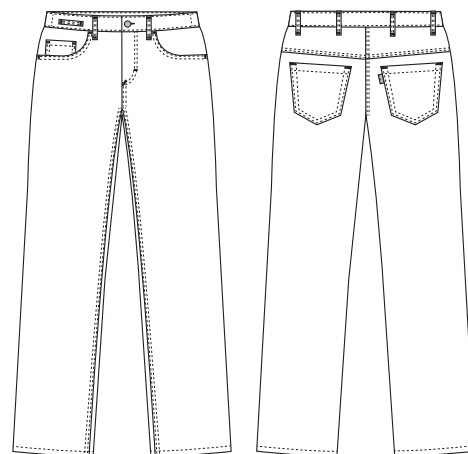


# Harmony

## 1050381 JEANS, TWIGGY (Ordernumber: 1050381-0000)

Twiggy will appeal to all women with straight up and down figures. This style has slim hips and thighs. The waist is larger than normal - and slightly lower.



### COLOURS:



0000-White



### FACTS:

- Front and back pockets
- Classic denim details
- Stretchable fabric
- Key strap at the waistband



**QUALITY:** 64/33/3% polyester/cotton/EOL stretch - 285 g/m<sup>2</sup>

**STOCK SIZES:** 34-62

**CERTIFICERING & OUR ICONS:**



STANDARD  
100  
2076-306  
DTI

www.oeko-tex.com



STeP

www.oeko-tex.com



MADE IN  
GREEN  
CB3VTM7MKY  
DTI

www.oeko-tex.com



key strap  
Nybo Workwear A/S



stretch  
Nybo Workwear A/S

### FINISHED MEASURES BEFORE WASHING:

		XS		S		M		L		XL		2XL		3XL		4XL	
	Stamping size	34	36	38	40	42	44	46	48	50	52	54	56	58	60	62	Tolerance
<b>A</b>	1/2 Waist width	35	37	39	41	43	45	47	49	51	53	55	57	59	61	63	+/- 1,5 cm
<b>B</b>	1/2 Hip width	46,5	48	49,5	51	52,5	54,5	56,5	58,5	60	62	64	66	68	70	72	+/- 1,5 cm
<b>E1*</b>	Rise (Help measure for hip)	12	12	12	12	12	12	12	12	14	14	14	14	14	14	14	
<b>C</b>	Side length	99,5	100	100,8	101,5	102,1	102,9	103,4	104	105	106,5	106,5	107,5	108	109	110	+/- 2,0 cm
	Side length (102)	109,5	110	110,8	111,5	112,1	112,9	113,4	114	115	116,5	116,5	117,5	118	119	120	+/- 2,0 cm
<b>D</b>	Inseam length	82	82	82	82	82	82	82	82	82	82	82	82	82	82	82	+/- 1,5 cm
	Inseam length (102)	92	92	92	92	92	92	92	92	92	92	92	92	92	92	92	+/- 1,5 cm

Please note: Final measures will depend on tolerance in garment making (See above) and measuring method (+/- 0.5 cm)  
Also note: Washing and drying conditions in industrial laundering can further more give a shrinkage up to 3-5% (Depending of material)  
All models meet the requirements industrial laundry. Washing instructions on our homepage [www.nybo.com](http://www.nybo.com)

### DOMESTIC LAUNDERING:



PURVEYOR TO H. M. THE QUEEN OF DENMARK

**NYBO**  
WORKWEAR SINCE 1962

