

Harmony

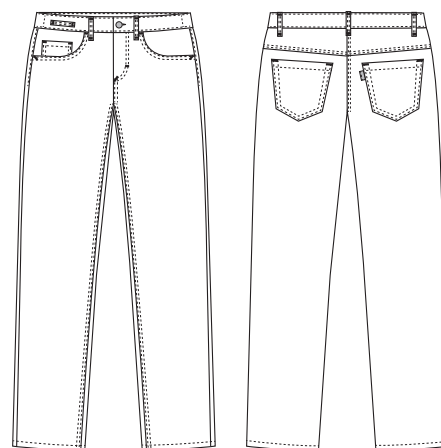
1051321 JEANS, MODERN FIT (Ordernumber: 1051321-0000)

Flexible stretch jeans with moderate/low waist. Perfect for users preferring a sporty and feminine cut. Front pockets and back pockets in classic jeans cut. Adjustable elastic inside back of waistband offers practical solution for individual adjustment of fit and high comfort level during work situations. Fit designed to keep jeans in place without pulling down when you sit or during working positions. Horizontal belt loop placed close to the deep, roomy front pockets is highly functional e.g., key chains and ID cards. This style signals a clean and modern appearance. Narrow leg opening adds a young and casual look.

COLOURS:



0000-White 0072-Black



FACTS:

- Classic 5-pocket jeans.
- Waistband with button and zipper closure.
- Adjustable elastic inside waistband, at back.
- Two roomy front pockets.
- Two classic jeans back pockets.
- Moderate/low waist height.
- Slimming hip and thigh area.
- Narrow leg opening.
- Light weight quality without being transparent.

QUALITY: 64/34/2% polyester/cotton/EOL stretch – 245 g/m²

STOCK SIZES: XS - 4XL

CERTIFICERING & OUR ICONS:



**STANDARD
100**
2076-306
DTI

www.oeko-tex.com



STeP
www.oeko-tex.com



**MADE IN
GREEN**
CB3VTM7MX
DTI
www.oeko-tex.com



FINISHED MEASURES BEFORE WASHING:

| | Stamping size | XS | S | M | L | XL | 2XL | 3XL | 4XL | Tolerance |
|------------|-----------------------------|------|-----|------|-------|------|-------|------|-------|------------|
| A | 1/2 Waist width | 36,5 | 40 | 44 | 49 | 55 | 61 | 67 | 73 | +/- 1,5 cm |
| B | 1/2 Hip width | 46 | 49 | 52,5 | 56 | 61 | 66 | 71 | 76 | +/- 1,5 cm |
| E1* | Rise (Help measure for hip) | 11,6 | 12 | 12,5 | 13 | 13,5 | 14 | 14,5 | 15 | |
| C | Side length | 101 | 102 | 103 | 104,5 | 106 | 107,5 | 109 | 110,5 | +/- 2,0 cm |
| D | Inseam length | 82 | 82 | 82 | 82 | 82 | 82 | 82 | 82 | +/- 1,5 cm |

Please note: Final measures will depend on tolerance in garment making (See above) and measuring method (+/- 0.5 cm)
Also note: Washing and drying conditions in industrial laundering can further more give a shrinkage up to 3-5% (Depending of material)
All models meet the requirements industrial laundry. Washing instructions on our homepage www.nybo.com

DOMESTIC LAUNDERING:



PURVEYOR TO H. M. THE QUEEN OF DENMARK
NYBO
WORKWEAR SINCE 1962

