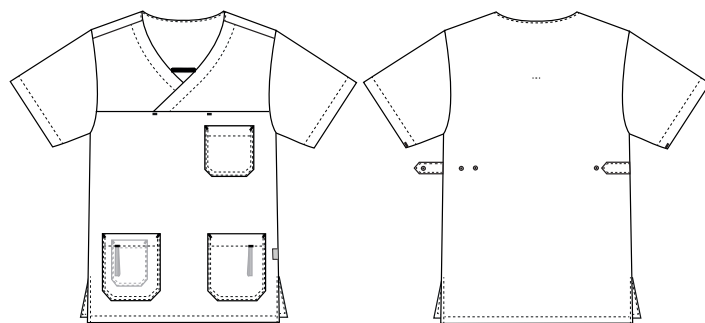


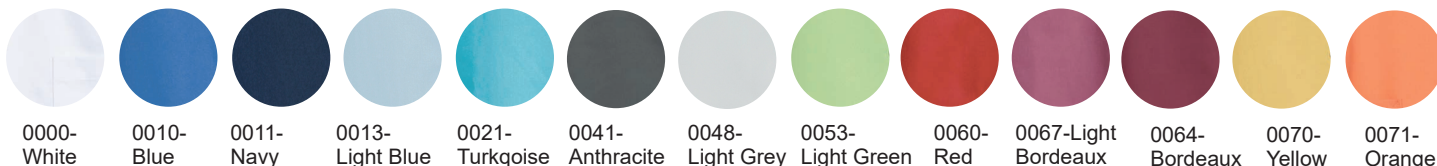
# Charisma Premium

## 5470651 UNIEX SMOCK (Ordernumber: 5470651-0021)

The model has long slits in the sides for extra width. The shape is cut straight and covers well at the back. The sleeves cover the upper arms nicely and has a modern and trendy appearance. This smock is made of the new pleasant temperatureregulating fabric contains TENCEL™ Lyocell fibers.



### COLOURS:



### FACTS:

- Key straps inside the hip pockets
- Pencil strap inside the chest pocket
- Mobile and chest pocket which meet users' present needs
- Slits for better comfort
- Adjustment straps in the unisex model for better freedom of movement
- FlexFix press buttons
- Temperature regulating fabric
- V-neck makes the neck and face appear a little slimmer
- Comes in a wide spectrum of colours, to match different trousers



**QUALITY:** 50/50% polyester/TENCEL™ Lyocell - 200 g/m<sup>2</sup>  
**STOCK SIZES:** XS - 4XL (5XL - 6XL special order)  
**CERTIFICERING & OUR ICONS:**



**GREEN BUTTON**  
 GOOD FOR PEOPLE.  
 GOOD FOR NATURE.

TENCEL™ is a trademark of Lenzing AG .

### FINISHED MEASURES BEFORE WASHING:

		40	44	48	52	56	60	64	68	72	76	80	
	Stamping size	2XS	XS	S	M	L	XL	2XL	3XL	4XL	5XL	6XL	Tolerance
A	1/2 Chest width	47	51	55	59	63	68	73	78	83	88	93	+/- 1,5 cm
B	1/2 Bottom width	48,5	52,5	56,5	60,5	64,5	69,5	74,5	79,5	84,5	89,5	94,5	+/- 1,5 cm
C	Back length	74,5	75,5	76,5	77,5	78,5	79,5	80,5	81,5	82,5	83,5	84,5	+/- 1,5 cm
D	Sleeve length	26	27	28	29	30	31	32	33	34	35	36	+/- 1,0 cm

Please note: Final measures will depend on tolerance in garment making (See above) and measuring method (+/- 0.5 cm)  
 Also note: Washing and drying conditions in industrial laundering can further more give a shrinkage up to 3-5% (Depending of material)  
 All models meet the requirements industrial laundry. Washing instructions on our homepage [www.nybo.com](http://www.nybo.com)

### DOMESTIC LAUNDERING:

